



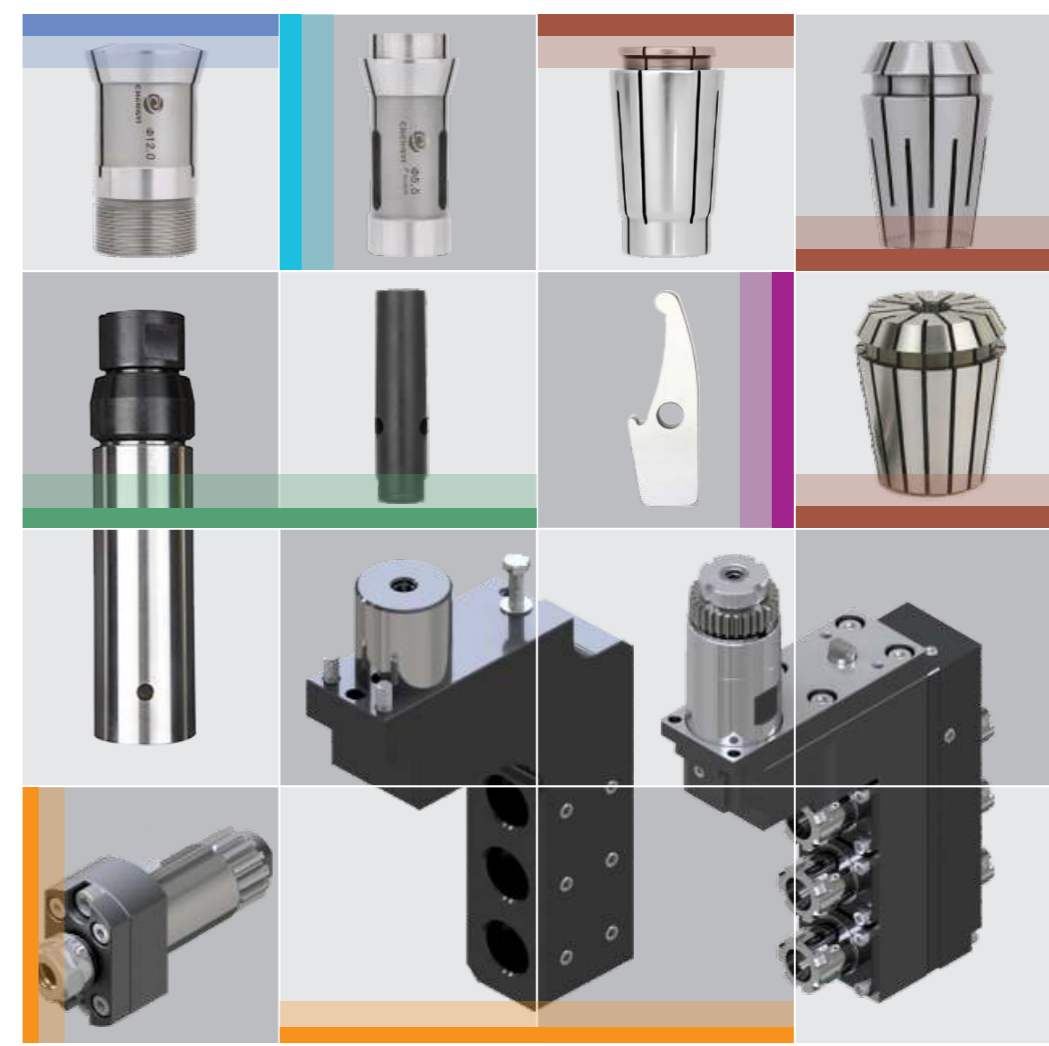
# CNC自動車床零件

CNC Automatic lathe parts

# 自動棒材送料機零件

Automatic bar feeder parts

綜合型錄 Comprehensive catalog **2023**



**A** Live tools for CNC lathes & Fixed knife holder 動力刀座

**B** Headstock collets 車床筒夾

**C** Guide bushes for lathes 車床導套

**D** Toggle 開關爪

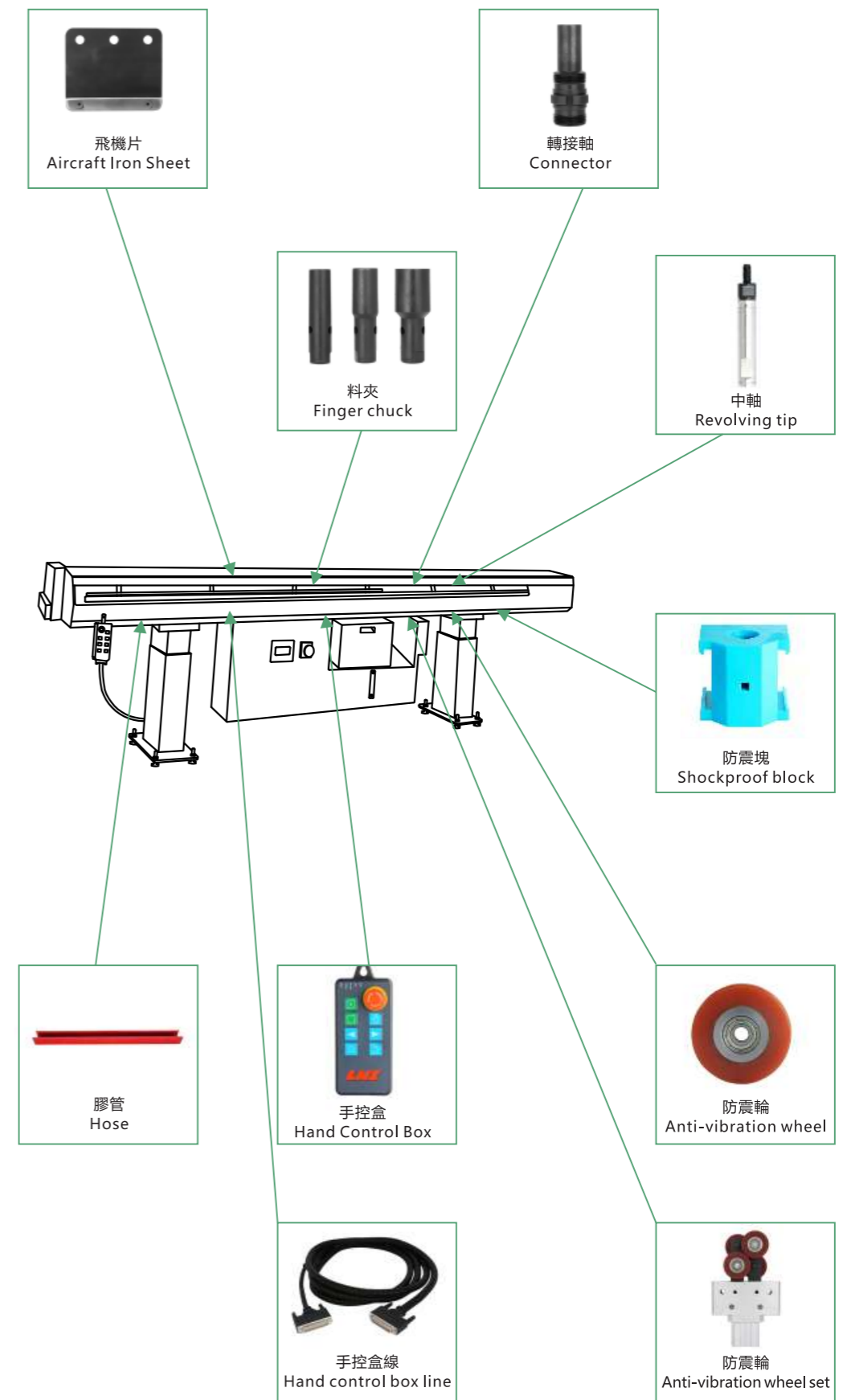
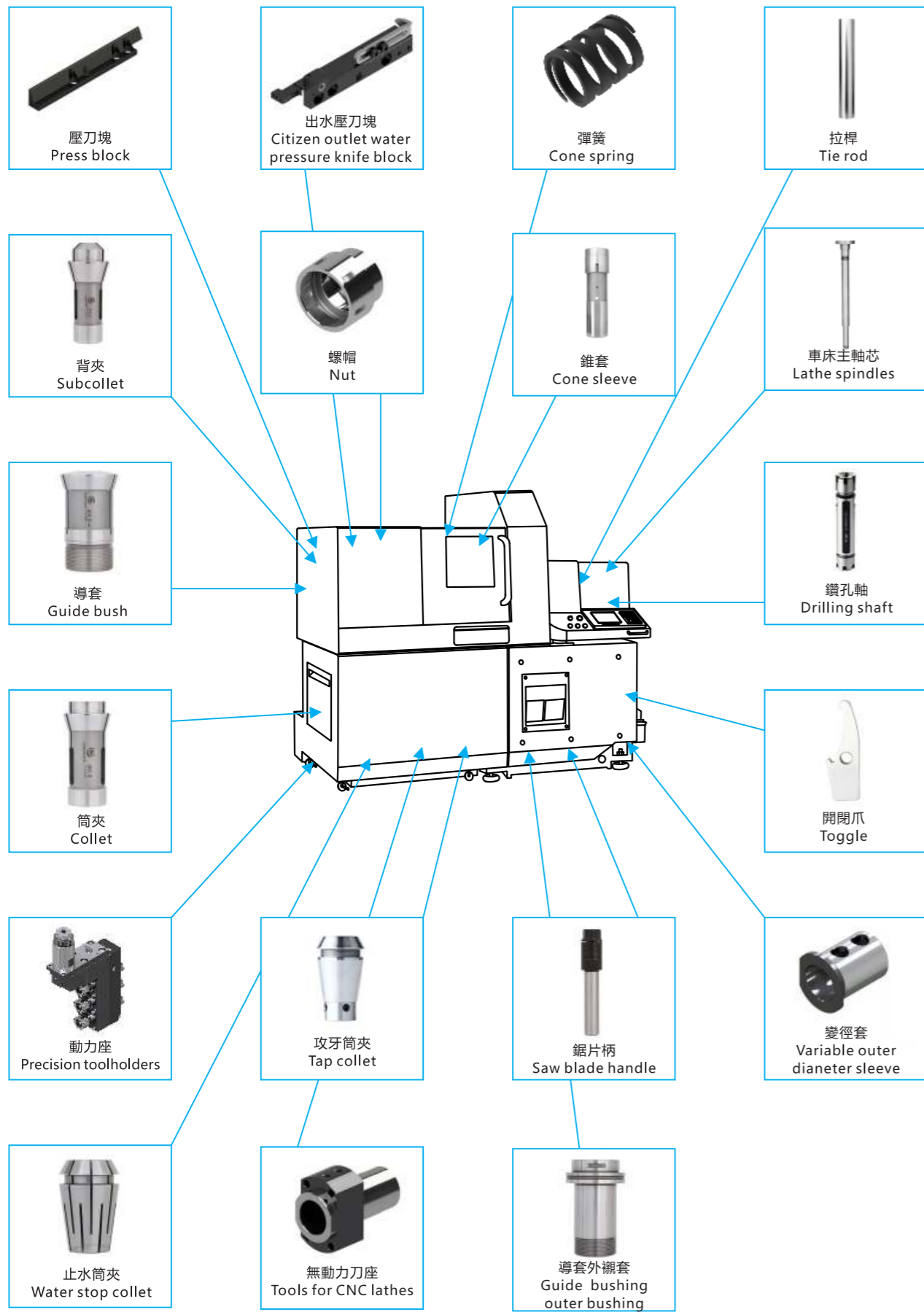
**E** Automatic bar feeder parts 自動棒材送料機零件

**F** CNC Lathe parts CNC車床零件

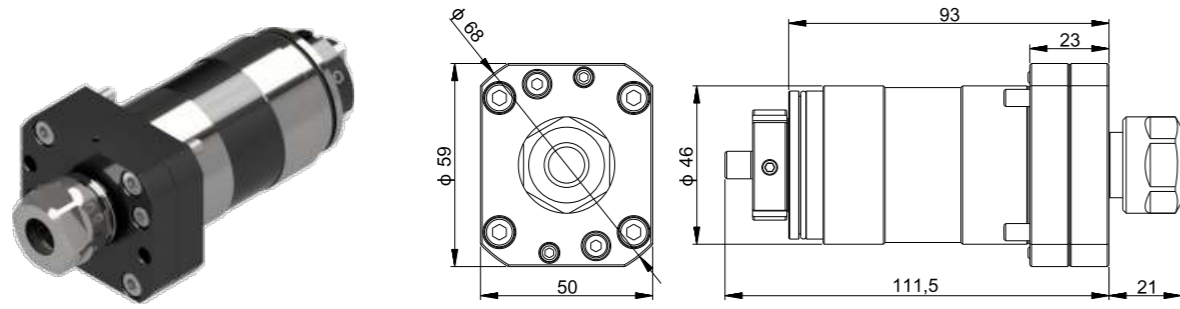
**G** Automatic lathe parts 車床零件 名陽機自動

**H** CNC Extension rod CNC車床鑽孔軸

**I** ER Collet / Waterstop collet / Tapping collet / SK collet 攻牙筒夾/SK筒夾/ER筒夾/止水筒夾

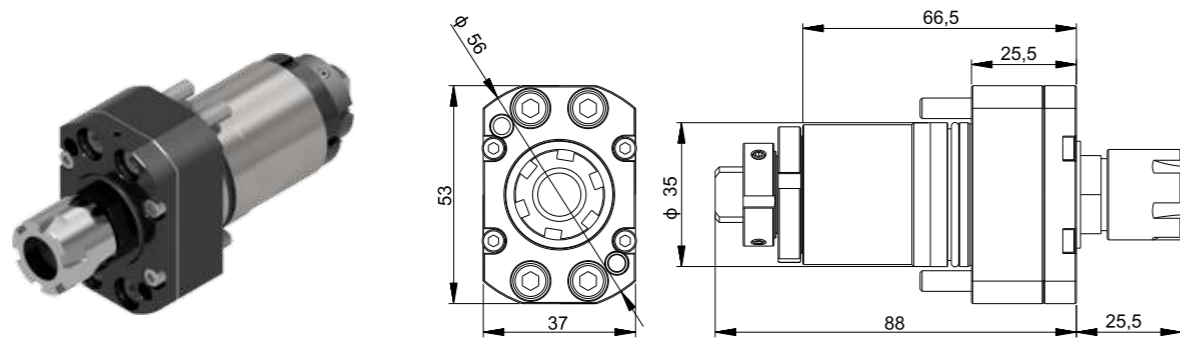


**正面側銑直柄迴轉刀座 Front side milling straight shank rotary tool holder**



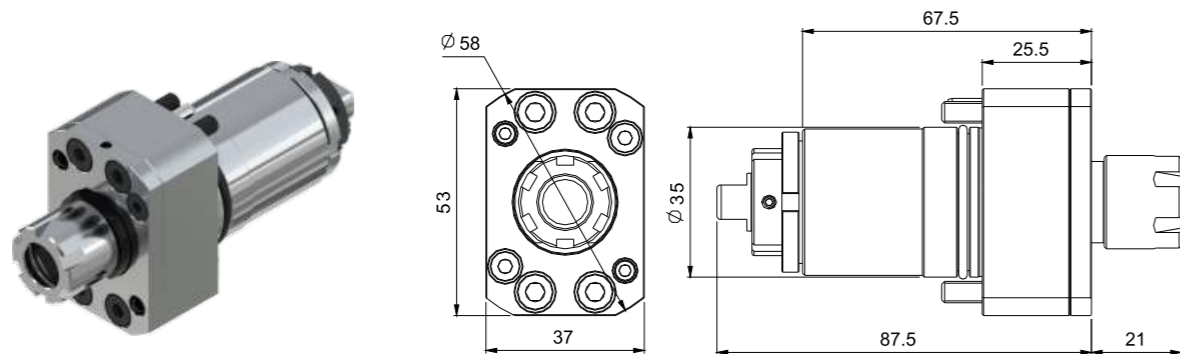
型號 Model	津上編號 TSUGAMI Number	轉速比 Speed Ratio	最高轉速 Max rpm	柄徑 Shank	孔徑 Aperture	使用筒夾 Use Collet
3268-T051	3268-T051	1:1	6000rpm	46	10.0	ER16

**背面直柄迴轉刀座 Back straight shank rotary tool holder**



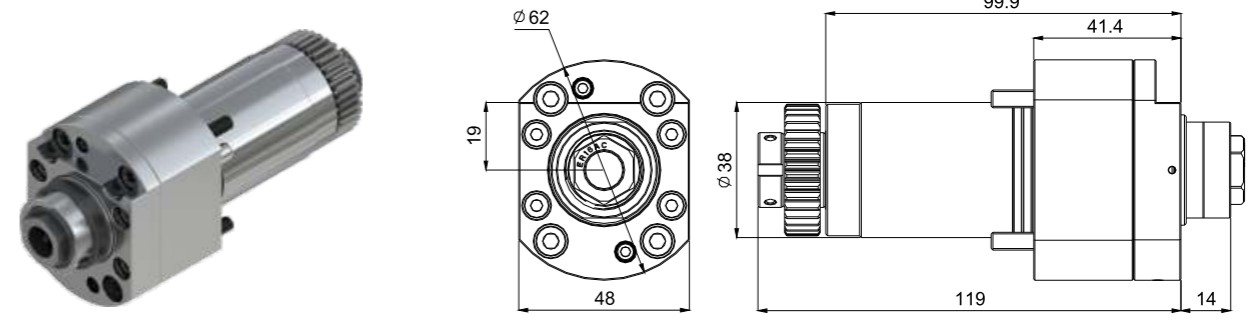
型號 Model	津上編號 TSUGAMI Number	轉速比 Speed Ratio	最高轉速 Max rpm	柄徑 Shank	孔徑 Aperture	使用筒夾 Use Collet
3281-S080	3281-S080	1:1	8000rpm	35	10.0	ER16

**背面直柄迴轉刀座 Back straight shank rotary tool holder**



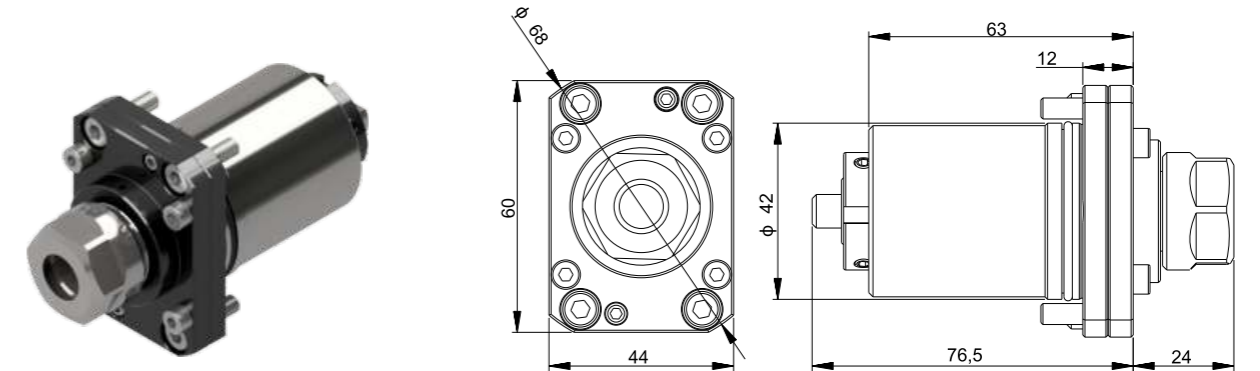
型號 Model	津上編號 TSUGAMI Number	轉速比 Speed Ratio	最高轉速 Max rpm	柄徑 Shank	孔徑 Aperture	使用筒夾 Use Collet
3281-Z79098	3281-Z79098	1:1	8000rpm	35	10.0	ER16

**正面側銑直柄迴轉刀座 Front side milling straight shank rotary tool holder**



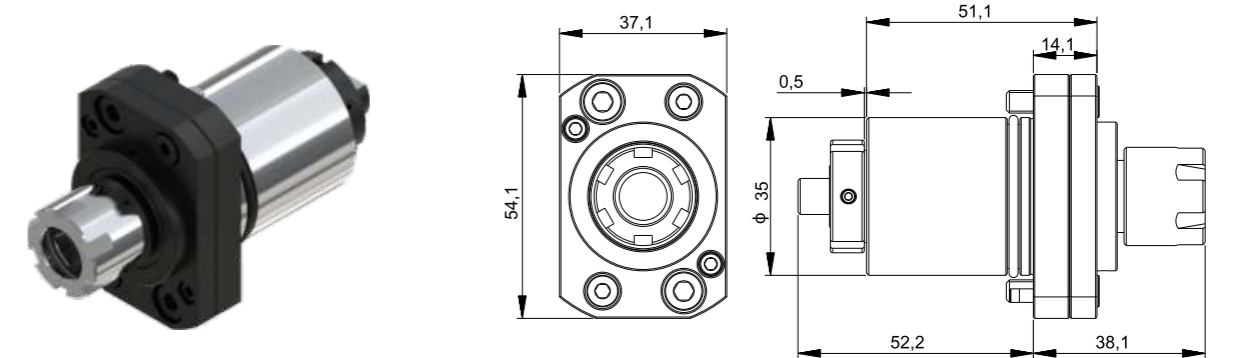
型號 Model	津上編號 TSUGAMI Number	轉速比 Speed Ratio	最高轉速 Max rpm	柄徑 Shank	孔徑 Aperture	使用筒夾 Use Collet
3281-Z74045-0100	3281-Z74045-0100	1:1	6000rpm	38	10.0	ER16

**背面直柄迴轉刀座 Back straight shank rotary tool holder**



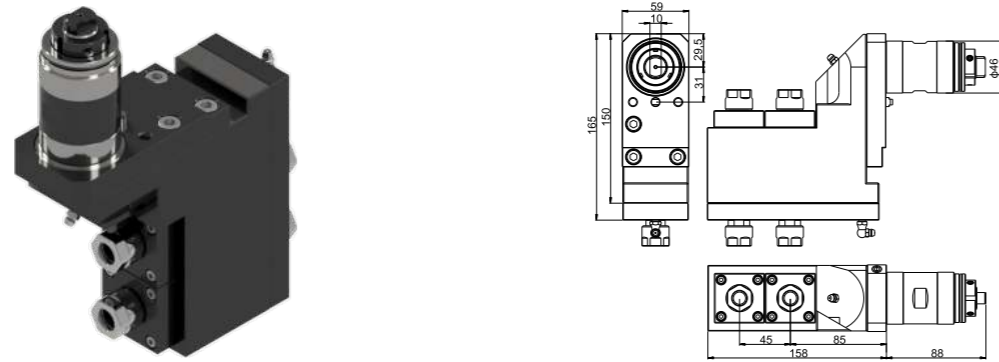
型號 Model	津上編號 TSUGAMI Number	轉速比 Speed Ratio	最高轉速 Max rpm	柄徑 Shank	孔徑 Aperture	使用筒夾 Use Collet
3282-Y041	3282-Y041	1:1	6000rpm	42	10.0	ER16

**背面直柄迴轉刀座 Back straight shank rotary tool holder**



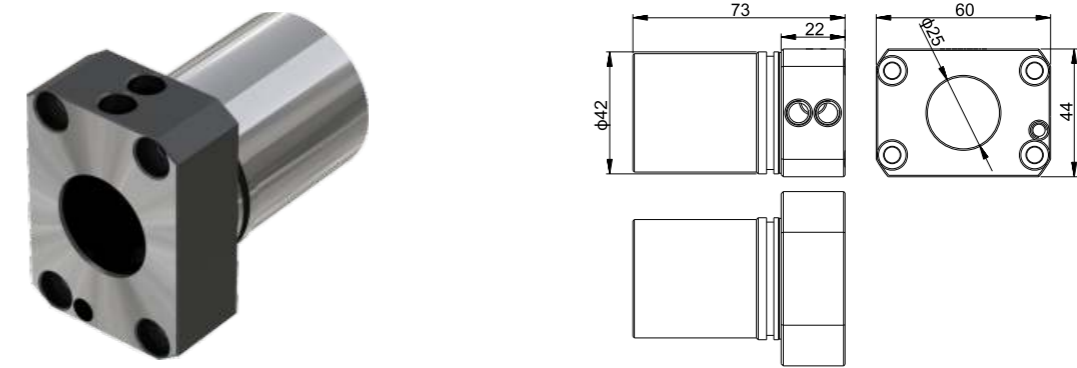
型號 Model	津上編號 TSUGAMI Number	轉速比 Speed Ratio	最高轉速 Max rpm	柄徑 Shank	孔徑 Aperture	使用筒夾 Use Collet
3220-Y7072	3220-Y7072	1:1	6000Rpm	35	10.0	ER16

### 正面2軸雙向動力座 Front 2-axis bidirectional power seat



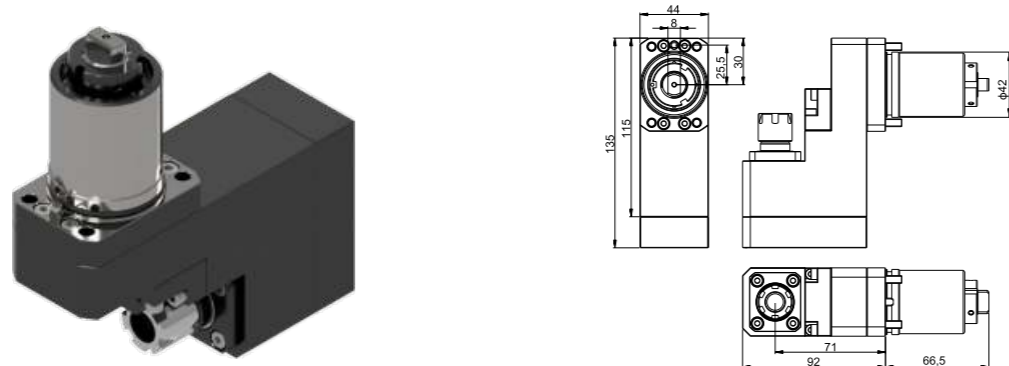
型號 Model	津上編號 TSUGAMI Number	轉速比 Speed Ratio	最高轉速 Max rpm	柄徑 Shank	孔徑 Aperture	使用筒夾 Use Collet
3282-Y901	3282-Y901	1:1	6000rpm	46	10.0	ER16

### 變徑套(中心出水) Reducer sleeve (center outlet)



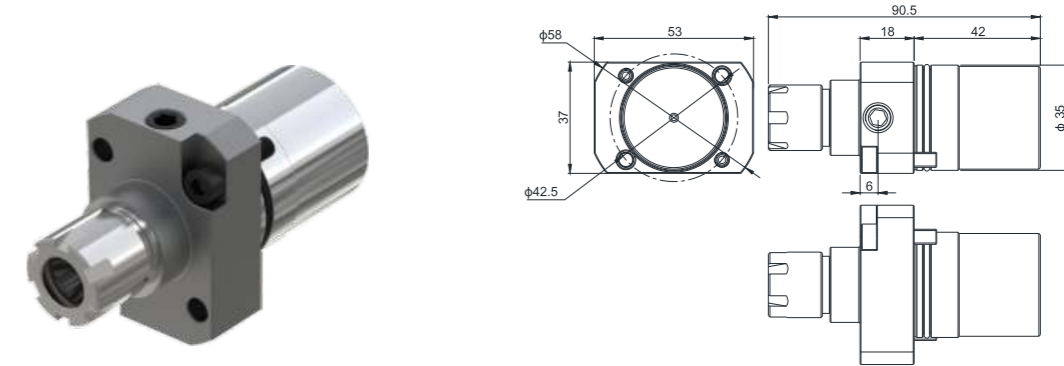
型號 Model	津上編號 TSUGAMI Number	轉速比 Speed Ratio	最高轉速 Max rpm	柄徑 Shank	孔徑 Aperture	使用筒夾 Use Collet
3282-Y212	3282-Y212	/	/	42	25.0	/

### 背面側銑單向動力座 Back side milling one-way power seat



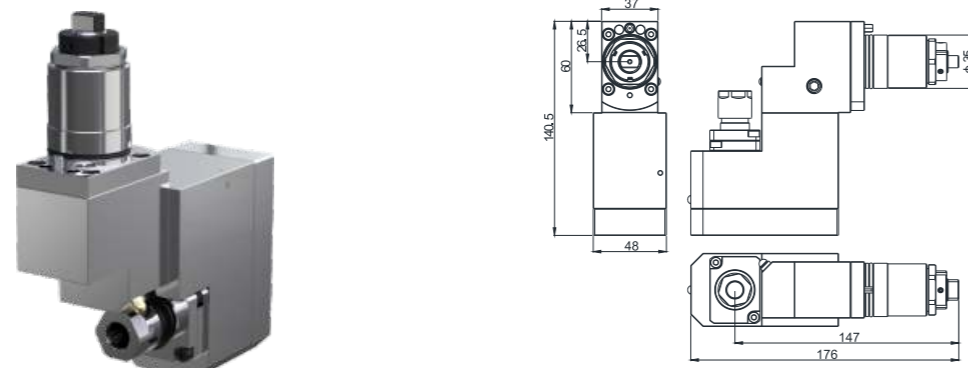
型號 Model	津上編號 TSUGAMI Number	轉速比 Speed Ratio	最高轉速 Max rpm	柄徑 Shank	孔徑 Aperture	使用筒夾 Use Collet
3290-Y041	3290-Y041	1:1	6000Rpm	42	10.0	ER16

### 背面鑽孔座 Back drilling seat



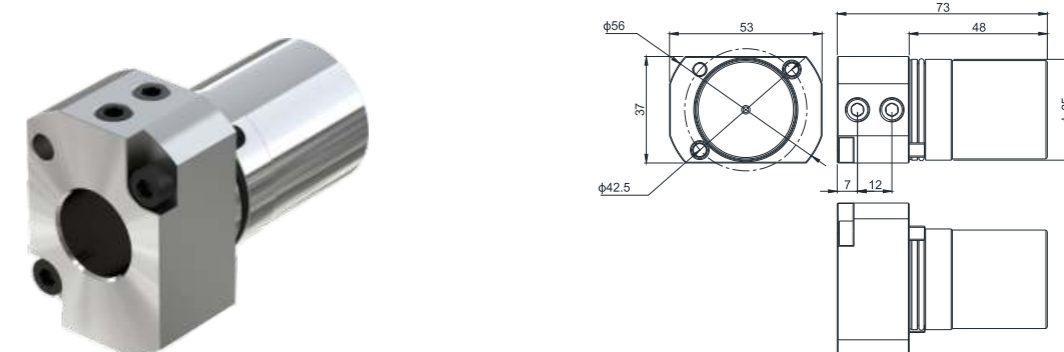
型號 Model	津上編號 TSUGAMI Number	轉速比 Speed Ratio	最高轉速 Max rpm	柄徑 Shank	孔徑 Aperture	使用筒夾 Use Collet
3282-Z71051-9010	3282-Z71051-9010	/	/	35	10.0	ER16

### 背面側銑單向動力座 Back side milling one-way power seat



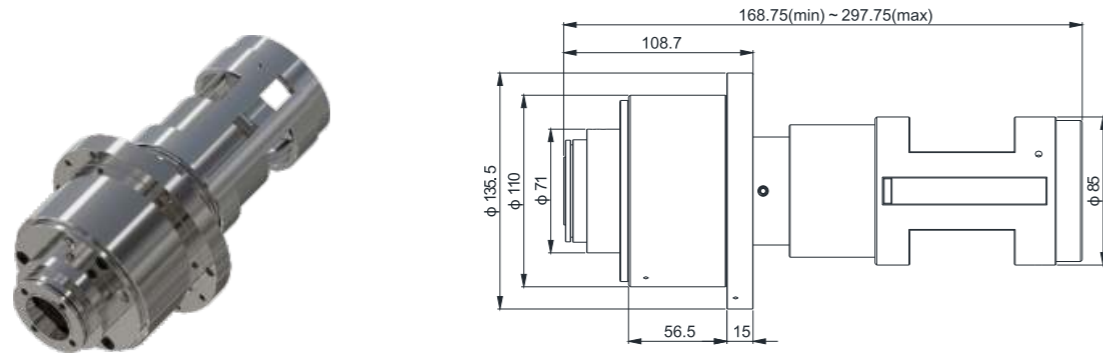
型號 Model	津上編號 TSUGAMI Number	轉速比 Speed Ratio	最高轉速 Max rpm	柄徑 Shank	孔徑 Aperture	使用筒夾 Use Collet
3281-Y461-9010	3281-Y461-9010	1:1	8000rpm	35	10.0	ER16

### 變徑套 Reducing sleeve



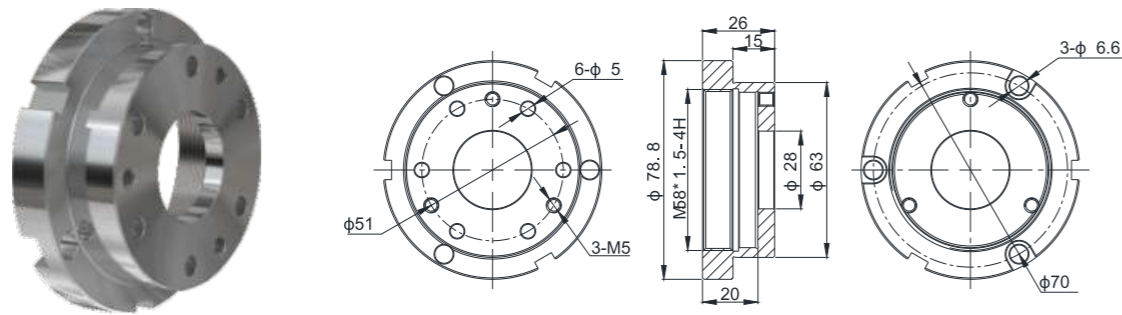
型號 Model	津上編號 TSUGAMI Number	轉速比 Speed Ratio	最高轉速 Max rpm	柄徑 Shank	孔徑 Aperture	使用筒夾 Use Collet
3281-Z79055-0302	3281-Z79055-0302	/	/	35	20.0	/

**津上20#同步迴轉導套座 TSUGAMI 20# synchronous rotary guide sleeve seat**



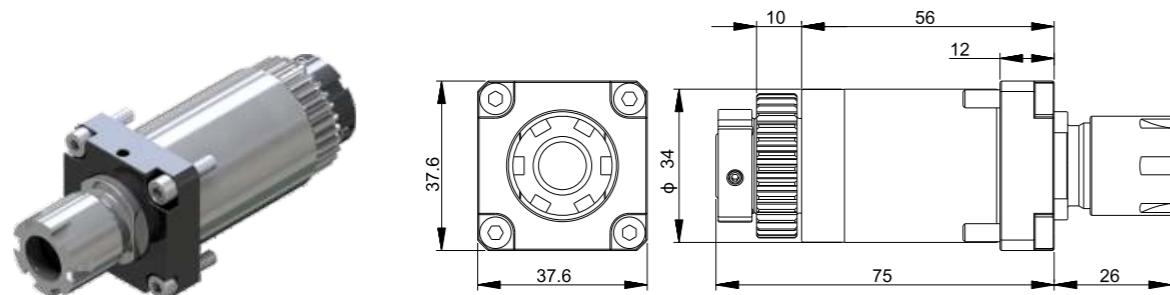
型號 Model	外徑 Outer Diameter
津上20#同步迴轉導套座	110

**津上20#主軸壓帽 TSUGAMI 20# spindle pressure cap**



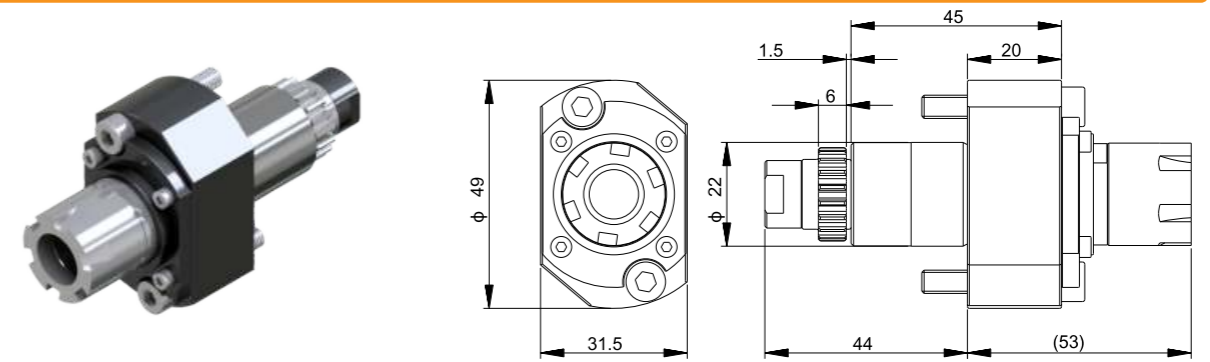
型號 Model	螺紋 Thread	孔徑 Aperture
津上20#主軸壓帽	M58x1.5-4H	28.0

**側銑直柄迴轉刀座 Side milling straight shank rotary tool holder**



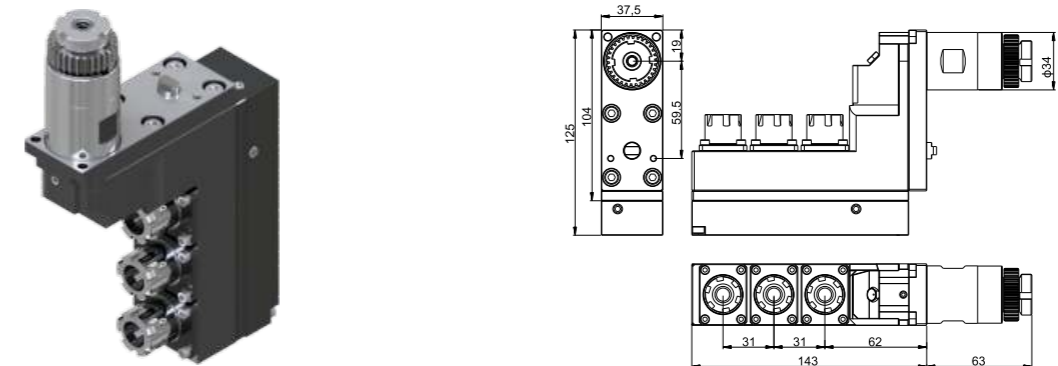
型號 Model	史達(星牌)編號 STAR Number	轉速比 Speed Ratio	最高轉速 Max rpm	柄徑 Shank	孔徑 Aperture	使用筒夾 Use Collet
33150	33150	1:1	8000rpm	34	10.0	ER16

**背面直柄迴轉刀座 Back straight shank rotary tool holder**



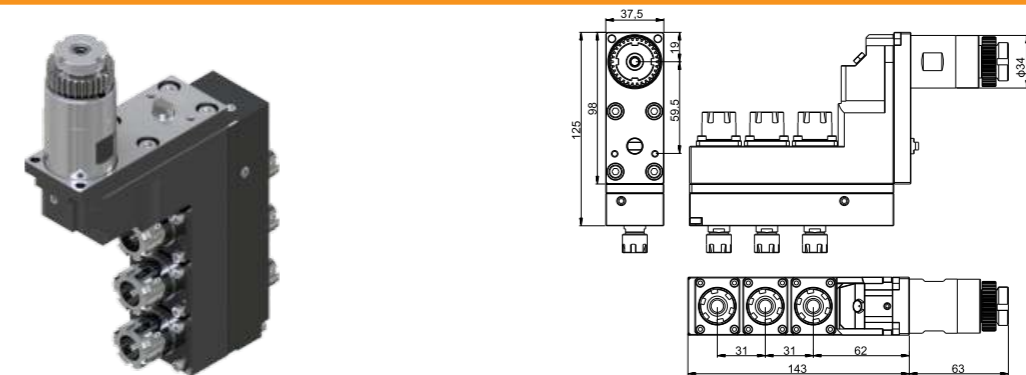
型號 Model	史達(星牌)編號 STAR Number	轉速比 Speed Ratio	最高轉速 Max rpm	柄徑 Shank	孔徑 Aperture	使用筒夾 Use Collet
57161	57161	1:1	6000rpm	22	10.0	ER16

**正面3軸單向動力座 Front 3-axis one-way power seat**



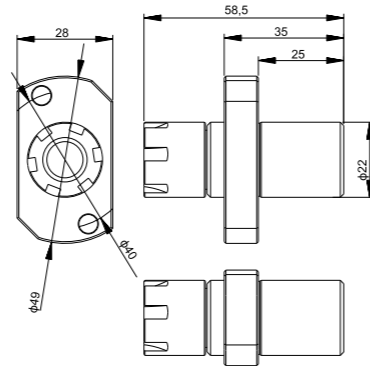
型號 Model	史達(星牌)編號 STAR Number	轉速比 Speed Ratio	最高轉速 Max rpm	柄徑 Shank	孔徑 Aperture	使用筒夾 Use Collet
66151	66151	1:1	6000rpm	34	10.0	ER16

**正面3軸雙向動力座 Front 3-axis bidirectional power seat**



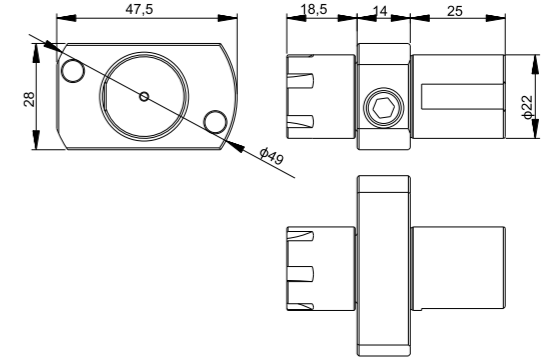
型號 Model	史達(星牌)編號 STAR Number	轉速比 Speed Ratio	最高轉速 Max rpm	柄徑 Shank	孔徑 Aperture	使用筒夾 Use Collet
67161	67161/OM155	1:1	6000Rpm	34	10.0/7.0	ER16/ER11

背面鑽孔座 Back drilling seat



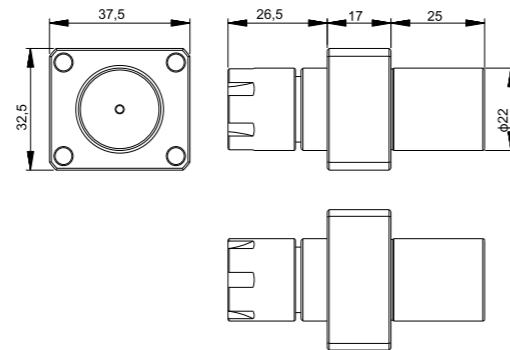
型號 Model	史達(星牌)編號 STAR Number	轉速比 Speed Ratio	最高轉速 Max rpm	柄徑 Shank	孔徑 Aperture	使用筒夾 Use Collet
54121-01	54121-01	/	/	22	10.0	ER16

背面鑽孔座(中心出水) Back drilling seat (center water outlet)



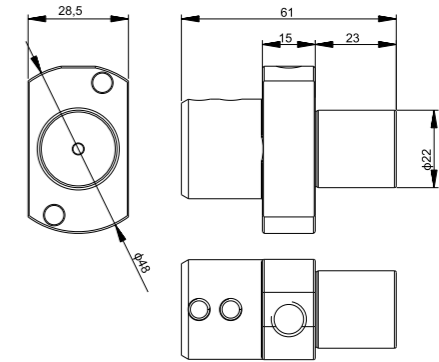
型號 Model	史達(星牌)編號 STAR Number	轉速比 Speed Ratio	最高轉速 Max rpm	柄徑 Shank	孔徑 Aperture	使用筒夾 Use Collet
67127	67127	/	/	22	10.0	ER16

背面鑽孔座 Back drilling seat



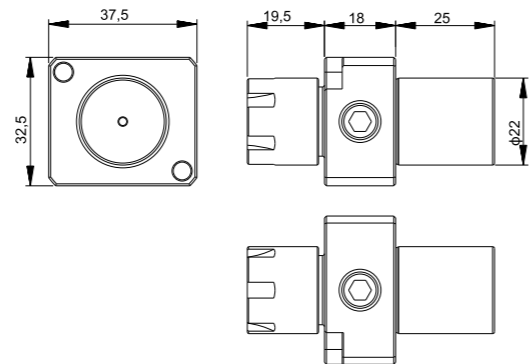
型號 Model	史達(星牌)編號 STAR Number	轉速比 Speed Ratio	最高轉速 Max rpm	柄徑 Shank	孔徑 Aperture	使用筒夾 Use Collet
0R122	0R122	/	/	22	10.0	ER16

背面側固刀座(中心出水) Back side fixed knife holder (center water outlet)



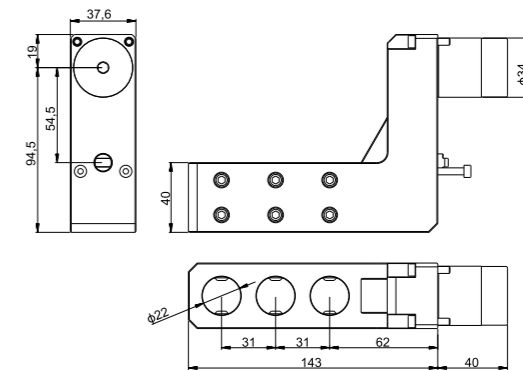
型號 Model	史達(星牌)編號 STAR Number	轉速比 Speed Ratio	最高轉速 Max rpm	柄徑 Shank	孔徑 Aperture	使用筒夾 Use Collet
B2E22	B2E22	/	/	22	3/4/5/6/8/10/12/16	/

背面鑽孔座(中心出水) Back drilling seat (center water outlet)



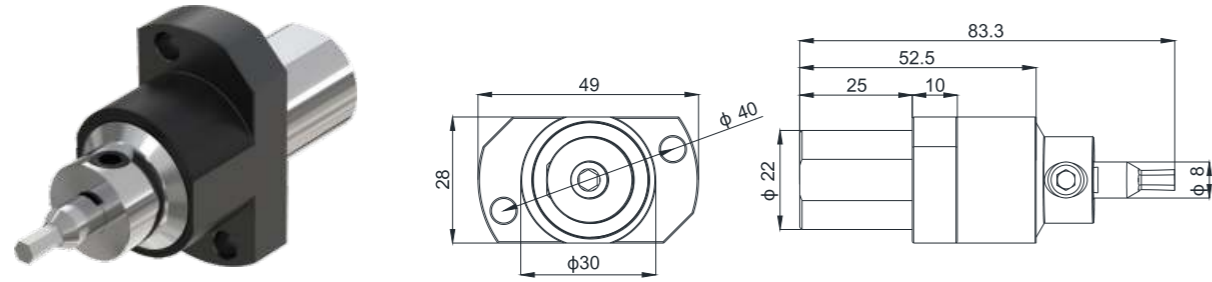
型號 Model	史達(星牌)編號 STAR Number	轉速比 Speed Ratio	最高轉速 Max rpm	柄徑 Shank	孔徑 Aperture	使用筒夾 Use Collet
0R123	0R123	/	/	22	10.0	ER16

正面3孔/鑽孔座 Front 3 holes/drilling seat



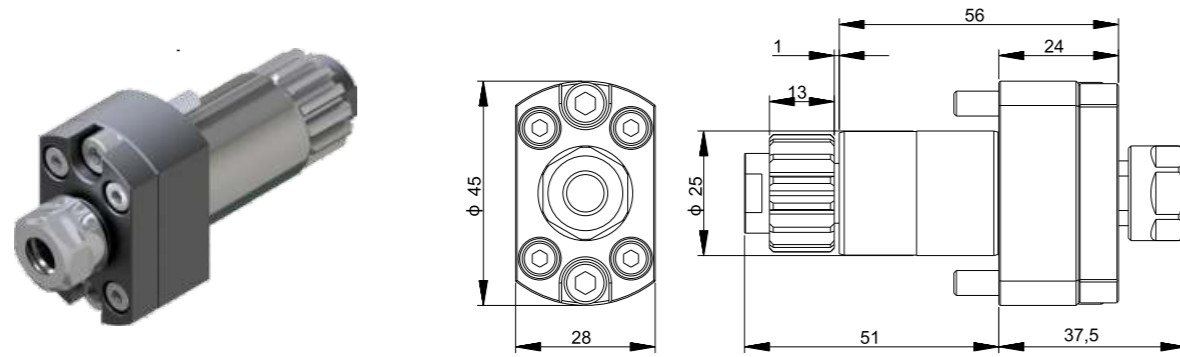
型號 Model	史達(星牌)編號 STAR Number	轉速比 Speed Ratio	最高轉速 Max rpm	柄徑 Shank	孔徑 Aperture	使用筒夾 Use Collet
STAR34322	STAR34322	/	/	34	22	/

**STAR20#背軸旋轉沖削刀柄 STAR20# back axis rotary punching tool holder**



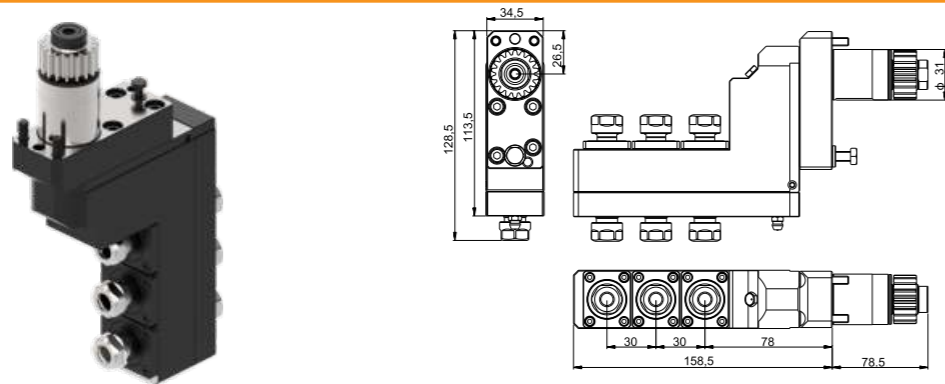
型號 Model	柄徑 Shank
STAR20#背軸旋轉沖削刀柄	22

**背面迴轉刀座 Back rotary cutterbed**



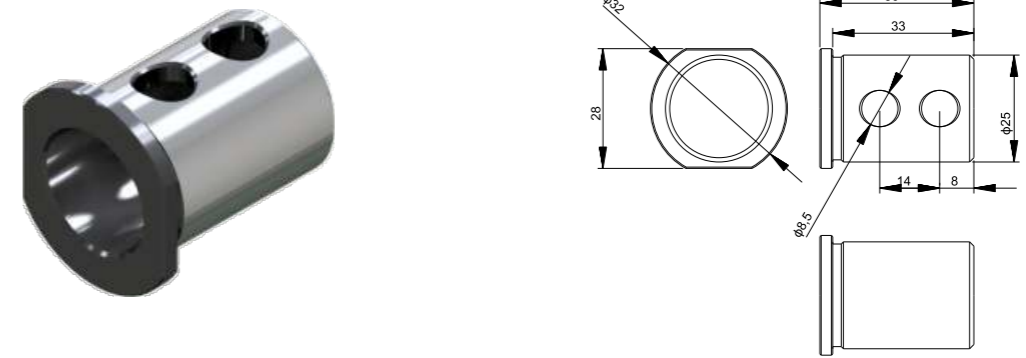
型號 Model	星辰(西鐵城)編號 CITIZEN Number	轉速比 Speed Ratio	最高轉速 Max rpm	柄徑 Shank	孔徑 Aperture	使用筒夾 Use Collet
MSC507	MSC507	1:1	10000rpm	25	7.0	ER11

**正面3軸雙向動力座 Front 3-axis bidirectional power seat**



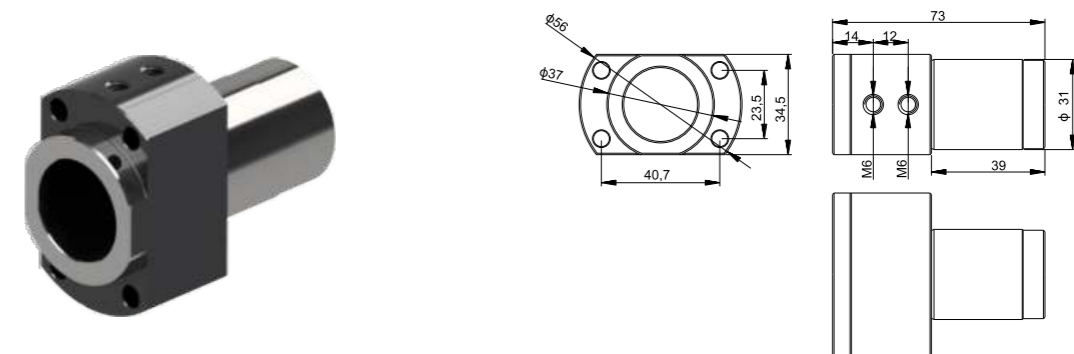
型號 Model	星辰(西鐵城)編號 CITIZEN Number	轉速比 Speed Ratio	最高轉速 Max rpm	柄徑 Shank	孔徑 Aperture	使用筒夾 Use Collet
BSE707	BSE707	1:1	6000rpm	31	7.0	ER11

**變徑套 Reducing sleeve**



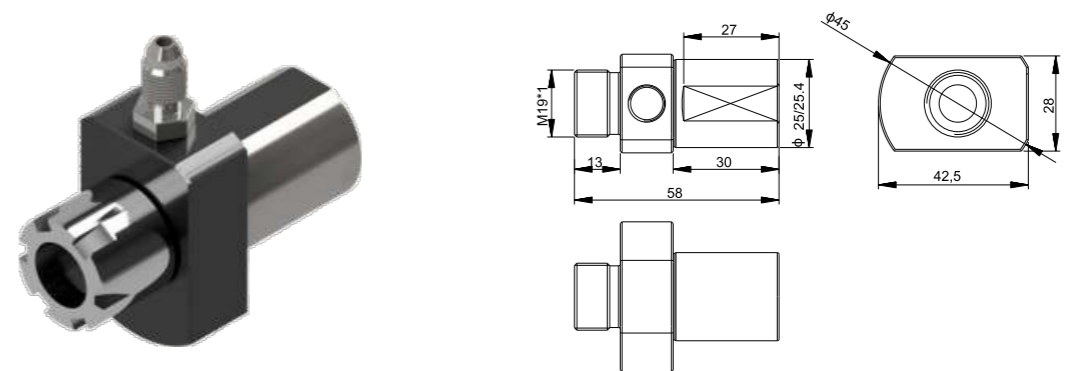
型號 Model	星辰(西鐵城)編號 CITIZEN Number	轉速比 Speed Ratio	最高轉速 Max rpm	柄徑 Shank	孔徑 Aperture	使用筒夾 Use Collet
SAU819	SAU819	/	/	25	19.05	/

**變徑套 Reducing sleeve**



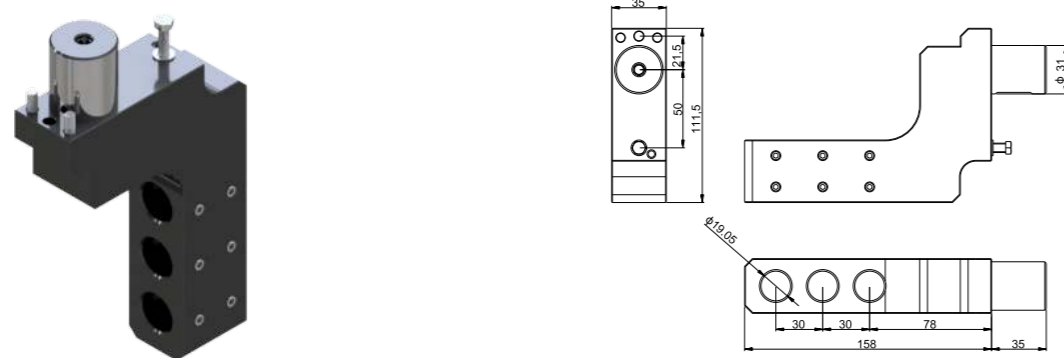
型號 Model	星辰(西鐵城)編號 CITIZEN Number	轉速比 Speed Ratio	最高轉速 Max rpm	柄徑 Shank	孔徑 Aperture	使用筒夾 Use Collet
SAU825	SAU825	/	/	31	25.4	/

**背面鑽孔座(中心出水) Back drilling seat (center water outlet)**



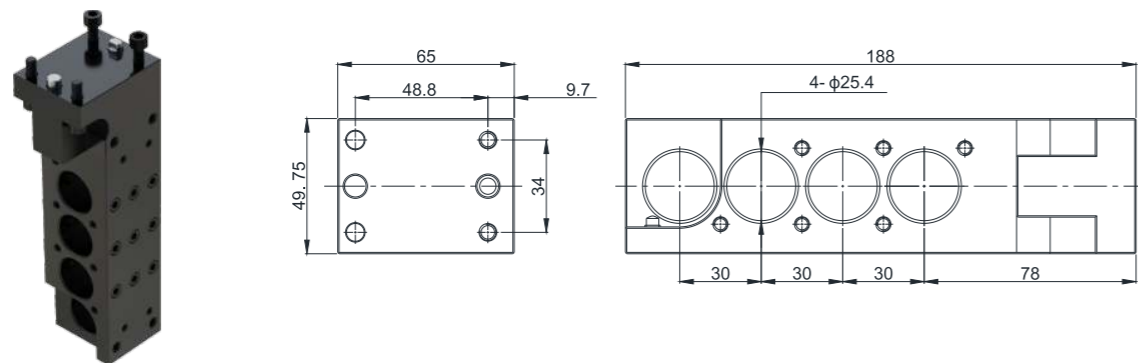
型號 Model	星辰(西鐵城)編號 CITIZEN Number	轉速比 Speed Ratio	最高轉速 Max rpm	柄徑 Shank	孔徑 Aperture	使用筒夾 Use Collet
GDE1025/GDE10254	/	/	/	25/25.4	10.0	/

### 正面3孔/鑽孔座 Front 3 Holes/drilling seat



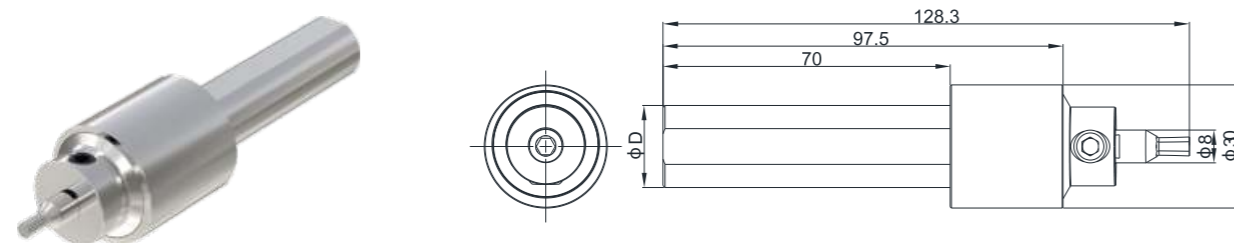
型號 Model	星辰(西鐵城)編號 CITIZEN Number	轉速比 Speed Ratio	最高轉速 Max rpm	柄徑 Shank	孔徑 Aperture	使用筒夾 Use Collet
GDF1207	GDF1207	/	/	31	19.05	/

### 正面4孔/鑽孔座 Front 4 Holes/drilling seat



型號 Model	星辰(西鐵城)編號 CITIZEN Number	轉速比 Speed Ratio	最高轉速 Max rpm	柄徑 Shank	孔徑 Aperture	使用筒夾 Use Collet
GDF1801	GDF1801	/	/	/	25.4	/

### 旋轉沖削刀柄 Rotary punching tool holder



型號 Model	柄徑 Shank
旋轉沖削刀柄	19.05/20/22/25/25.4

### 同心精度表 Accuracy measure



#### 筒夾圓孔 / Collet round

D	端口/Outlet space	檢測長度(L)	AAA級
1.0~1.5	0.002	6	0.003
1.5~3.0	0.002	10	0.003
3.0~6.0	0.002	16	0.003
6.0~13.0	0.002	25	0.003
14.0~20.0	0.002	30	0.005

#### 筒夾圓孔 / Collet round

D	端口/Outlet space	檢測長度(L)	AA級
1.0~1.5	0.002	6	0.008
1.5~3.0	0.002	10	0.008
3.0~6.0	0.002	16	0.008
6.0~9.9	0.002	25	0.008
10~20.0	0.002	30	0.012

#### 導套圓孔 / Guide bush round

D	端口/Outlet space	檢測長度(L)	AAA級
1.0~1.5	0.002	6	0.003
1.5~3.0	0.002	10	0.003
3.0~6.0	0.002	16	0.003
6.0~13.0	0.002	25	0.003
14.0~20.0	0.002	30	0.005

#### 導套圓孔 / Guide bush round

D	端口/Outlet space	檢測長度(L)	AA級
1.0~1.5	0.002	6	0.005
1.5~3.0	0.002	10	0.005
3.0~6.0	0.002	16	0.005
6.0~9.9	0.002	25	0.005
10~20.0	0.002	30	0.008

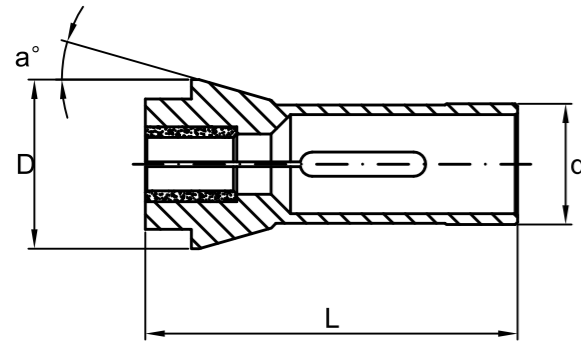
筒夾內孔選項 Collet inner hole option

 <p>CC01 無防滑槽 Smooth</p>	 <p>CC02 有防滑槽 Grooves</p>	 <p>CC03 強力型 Powerful</p>	 <p>CC04 加長筒夾 Extended subcollet</p>
 <p>CC05 正方形 Square</p>	 <p>CC06 長方形 Rectangle</p>	 <p>CC07 六角形 Hexagon</p>	 <p>CC08 異形 Special shape</p>
 <p>CC09 三槽灌膠 With seal</p>	 <p>CC10 閃電溝 V groove</p>	 <p>CC11 S溝 S-shaped groove</p>	 <p>CC12 椎度定位槽 Vertebral positioning groove</p>
 <p>CC13 小d定位槽 Small d positioning groove</p>	 <p>CC14 跳躍 Jump</p>	 <p>CC15 塑鋼 POM</p>	 <p>CC16 尾端內孔加銅襯套 Copper bushing with inner hole at tail end</p>

其他筒夾 Other collets

 <p>變徑筒夾 Elastic change outer diameter collet</p>	 <p>變徑筒夾 Elastic change outer diameter collet</p>	 <p>訂製筒夾 Customized collet</p>	 <p>訂製筒夾 Customized collet</p>
 <p>緊急筒夾 Emergency collet</p>	 <p>內漲式筒夾 Internal expansion collet</p>	 <p>內漲式筒夾 Internal expansion collet</p>	 <p>內漲式筒夾 Internal expansion collet</p>
 <p>內漲式筒夾 Internal expansion collet</p>	 <p>氣動膜片爪 Pneumatic diaphragm claw</p>	 <p>氣動膜片爪 Pneumatic diaphragm claw</p>	 <p>氣動膜片爪 Pneumatic diaphragm claw</p>
 <p>瑞士製筆頭機筒夾 Swiss-made pen machine cutter head</p>	 <p>特殊雙面夾緊筒夾 Special double-sided clamping collet</p>	 <p>跳躍筒夾 Jumping collet</p>	 <p>銅筒夾 Copper collet</p>

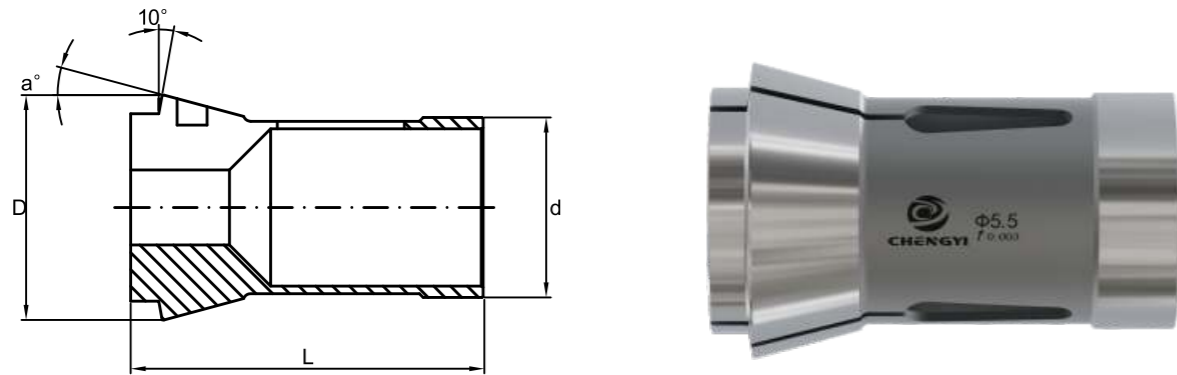
# 走心筒夾 Headstock collets for lathes



Machines	Type	Item No	d	L	D	Article No				
星辰(西鐵城) CITIZEN	R04	3204	ø 8.0	36	ø 11.5					
	R07,D/F/G/L-10	3910	ø 15.0	64	ø 21.0	F15/580	120E	TF15	40.003	
	B12,F12	3212	ø 16.0	64	ø 21.0					
	D/E/F/L/M-16,E/F/L/M-20	3720	ø 25.0	77	ø 35.0	D25/64	145E	TF25		
	L16/20,F16/20,M16,G20,E20	3216	ø 26.0	67	ø 36.0					511.001
	F25,L25,E25,E25J	3225	ø 30.0	78	ø 42.0					
	L32,M32,E32,G32	3232	ø 37.0	92	ø 47.0					
史達(星牌) STAR	SW7,SW10,JNC10,RNC10,SNC10	3910	ø 15.0	64	ø 21.0	F15/580	120E	TF15	40.003	
	SE12,S13,VNC12,SJ15	3512	ø 18.0	64	ø 25.0					
	SB16	3616	ø 20.0	67	ø 26.0					
	RNC16,SE16,SR16,SH16	3516	ø 20.0	67	ø 28.0	F20/87	138E	TF20	40.004	
	JNC16, VNC20	3520	ø 24.0	65.5	ø 32.0					
	KNC16/20,SR20,VNC20	3720	ø 25.0	77	ø 35.0					
	JNC16, ZNC16,VNC20	3216	ø 26.0	67	ø 36.0					
	KJR25,SCN25	3725	ø 30.0	80	ø 42.0	F30/63	157E	TF30	40.006	
JNC32/25,VNC32,MR32	3932	ø 37.0	92	ø 47.0						
津上 TSUGAMI	T7,BOO7,BM07	3707	ø 10.0	46	ø 16.0	F10/1178	111E			140.001
	L10	3710	ø 14.0	47	ø 20.0					
	NT-11,NP-11	3910	ø 15.0	64	ø 21.0	F15/580	120E	TF15	40.003	
	BO12	3616	ø 20.0	67	ø 26.0				S16-HMS	
	NP-17,NP-16,NT-17	3717	ø 23.8	62	ø 28.0				S20-HM	
	NP-20,BS20,BO18,BS18	3721	ø 28.0	77	ø 35.0					
	BA-26L	3726	ø 33.0	80	ø 40.0				S25-HM	
	S-25,BS-26	3725	ø 30.0	80	ø 42.0					
	NP-32	3232	ø 37.0	92	ø 47.0					
	BH38	3738	ø 43.0	92	ø 53.0	F43		TF43	511.024	
BH38(SUB)	3739	ø 48.0	100	ø 54.0	F48		BS38	511.028		

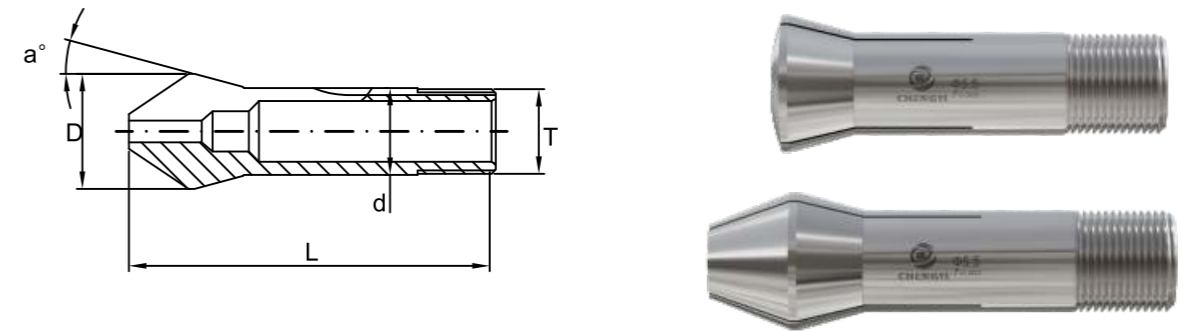
Machines	Type	Item No	d	L	D	Article No				
野村 NOMURA	NSP8410,NSP8420	3608	ø 12.0	58	ø 18.0					
	NSP1053,NN10K	3610	ø 16.0	50.5	ø 22.0					90.015
	NSP1653,NSP1253	3616	ø 20.0	68	ø 26.0					
	NN20KF	3216	ø 26.0	67	ø 36.0					511.001
	P-23	3623	ø 29.0	72	ø 39.0					
	NNCP2553,NN25K	3625	ø 32.0	84.5	ø 42.0					
托尼士 TORNOS	M4,T4,TV	3904	ø 8.0	42	ø 12.0	F8/577	101E	TF8	40.001	
	M7	3907	ø 10.0	47.5	ø 15.5	F10/86	109E	TF10	40.002	
	MS7	3108	ø 13.0	64	ø 19.0	F13/357	116E	TF13	40.016	
	R10,M10	3910	ø 15.0	64	ø 21.0	F15/580	120E	TF15	40.003	
	R125	3912	ø 16.0	64	ø 21.0		1212E	TF16	40.012	
	R16,M15	3516	ø 20.0	67	ø 28.0	F20/87	138E	TF20	40.004	
	RR20,R20,M20	3920	ø 25.0	77	ø 35.0	F25/64	145E	TF25	40.005	
	M25	3925	ø 30.0	80	ø 42.0	F30/63	157E	TF30	40.006	
托尼士 -DECO TORNOS- DECO	MR32,TBM32	3932	ø 37.0	92	ø 47.0	F37/740	1536E	TF37	40.008	
	DECO 7	3907	ø 10.0	47.5	ø 15.5	F10/86	109E	TF10	40.002	
	DECO 10	3910	ø 15.0	64	ø 21.0	F15/580	120E	TF15	40.003	
	DECO 13	3912	ø 16.0	64	ø 21.0		1212E	TF16	40.012	
	DECO 13/16	3816	ø 20.0	54	ø 26.0	F20/201	136E	F20/201	225.003	
	DECO 20, DELTA 12/20	3920	ø 25.0	77	ø 35.0	F25/64	145E	TF25	40.005	
韓華 HANWHA	DECO 26, SIGMA 20	3826	ø 30.0	65	ø 38.0	F30/101	1446E	O161	90.009	
	DECO 32	3932	ø 37.0	92	ø 47.0	F37/740	1536E	TF37	40.008	
	HANEX11,SL12	3912	ø 16.0	64	ø 21.0					
	HANEX17,ML18-G	2215	ø 22.0	55	ø 30.0	F22/71	140E			
	HANEX20	3920	ø 25.0	77	ø 35.0	F25/64	145E	TF25		
	HANEX25	3425	ø 32.0	79	ø 45.0					
	SL-32	3932	ø 37.0	92	ø 47.0	F37/740	1536E	TF37		
哈挺 HARDINGE	SL-35	3435	ø 40.0	92	ø 49.0					
	SL-35HP-II,SUB	3436	ø 40.0	92	ø 50.0					
	SL-38HP-II	3438	ø 44.0	94	ø 52.0					
德馬吉 DMG	SL,ST220	3920	ø 25.0	77	ø 35.0	F25/64	145E	TF25		
	ST225	3925	ø 30.0	80	ø 42.0	F30/63	157E	TF30		
寶麗金 POLYGYM	GMC20	3320	ø 25.0	77	ø 35.0					
	DIAMOND 12,12CS	3212	ø 16.0	64	ø 21.0					
	DIAMOND 16,16CS	3616	ø 20.0	68	ø 26.0					
	DIMOAND 20,20B,20CS,20CSB	3216	ø 26.0	67	ø 36.0					511.001
	DIMOAND 25,25B,25CS,25CSB	3225	ø 30.0	78	ø 42.0					
縉錫 JINN FA	DIMOAND 32,32b,32CS,32CSB	3232	ø 37.0	92	ø 47.0					
	DIMOAND SY-42	2242	ø 48.0	94	ø 60.0	F48/81	173E	TF48	231.009	
	JSL-20	3721	ø 28.0	77	ø 35.0					
王主 WANG TZYU	JSL-26	3726	ø 33.0	80	ø 40.0					
	JSL-32	3232	ø 37.0	92	ø 47.0					511.001
	SL-1693	3616	ø 20.0	68	ø 26.0					
王主 WANG TZYU	SL-2596	3225	ø 30.0	78	ø 42.0					
	SL-3295	3232	ø 37.0	92	ø 47.0					

前推式筒夾 Push-Type collets



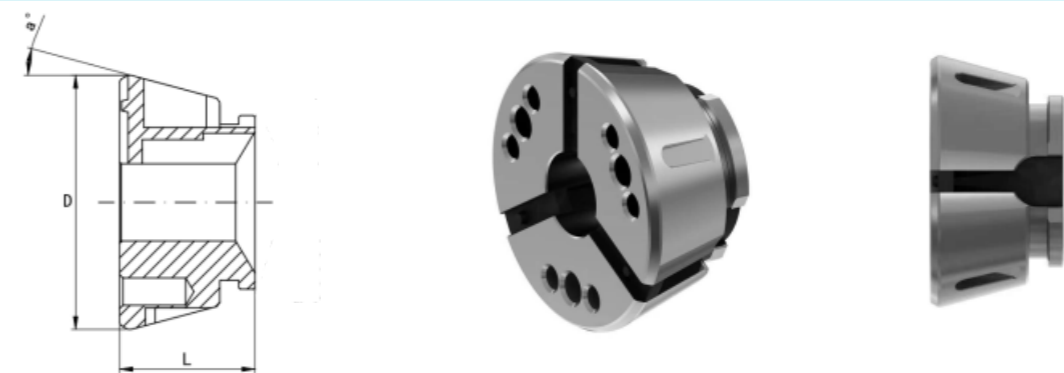
Machines	Type	Item No	d	L	D	DIN No	Schau No	NEU No
宮野 MIYANO	BNC20	1721	ø 27.0	73	ø 38.0			
	BNC34	1734	ø 44.4	108	ø 54.2			
	148E	1220	ø 28.0	70	ø 38.0		F28/39	231.004
	161E	1225	ø 32.0	75	ø 45.0	6343-32	F32/221	231.005
	164E	1232	ø 38.1	108	ø 49.0		F38/72	
	171E	1236	ø 42.0	94	ø 55.0	6343-42	F42/99	231.007
	173E	1242	ø 48.0	94	ø 60.0	6343-48	F48/81	231.009
	177E	1252	ø 58.0	94	ø 70.0			
洽群 CC	洽群32#(164E)	1232	ø 38.1	108	ø 49.0		F38/72	
	洽群36#(171E)	1236	ø 42.0	94	ø 55.0	6343-42	F42/99	231.007
	洽群42#(173E)	1242	ø 48.0	94	ø 60.0	6343-48	F48/81	231.009
	洽群52#(177E)	1252	ø 58.0	94	ø 70.0			
利高 LICO	利高32#(164E)	1232	ø 38.1	108	ø 49.0		F38/72	
	利高42#(173E)	1242	ø 48.0	94	ø 60.0	6343-48	F48/81	231.009
	利高52#(177E)	1252	ø 58.0	94	ø 70.0			
理研 RIKEN	SAD-25	1721	ø 30.0	66	ø 43.0			
	SAD-40	1742	ø 48	84	ø 66.0			
	SAD-50	1750	ø 56.0	94	ø 68.0			
	SAD-65	1765	ø 75.0	100	ø 93.0			
應戴克斯 INDEX	INDEX#36	1236	ø 42.0	94	ø 55.0	6343-42	F42/99	231.007
	INDEX#42	1242	ø 48.0	94	ø 60.0	6343-48	F48/81	231.009
	INDEX#52	1252	ø 58.0	94	ø 70.0			
	INDEX#60	1261	ø 66.0	110	ø 84.0	6343-60	F66/359	231.001
特勞普 TRAUB	TRAUB A-15	1215	ø 22.0	55	ø 30.0	6343-22	F22/71	
	TRAUB A-20	1220	ø 28.0	70	ø 38.0		F28/93	231.004
	TRAUB A-25	1225	ø 32.0	75	ø 45.0	6343-32	F32/221	231.005

Schaublin五軸磨刀座筒夾 Schaublin sharpening machine collet



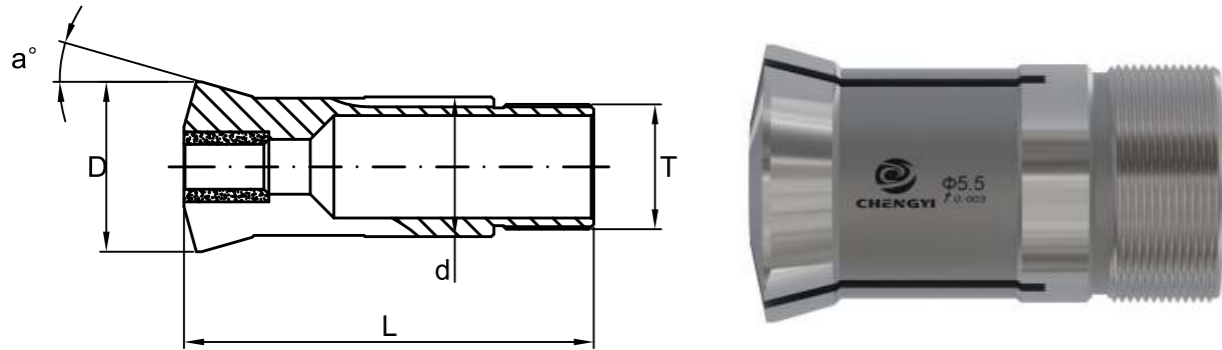
Machines	Type	Item No	d	L	D
肖柏林 Schaublin	B8	72-137	ø6	31.3	ø10.5
	W10	80-1	ø10	43.6	ø14
	W15	80-3	ø15.0	58.3	ø 20.2
	W20	80-4	ø20.0	73	ø 26.3
	W20	80-107	ø20.0	73	ø 26.3
	W20	80-92744	ø20.0	84.5	ø 26.3
	W25	80-5	ø25.0	97.6	ø 33.7

橡膠筒夾 Rubber collet



Machines	Type	L	D	a°
橡膠筒夾 Rubber collet	RC32	44	57.7	12°
	RC32N	49	57.7	12°
	RC42S	42	79.3	15°
	RC42N	47	79.3	15°
	RC52S	46	79.2	15°
	RC52N	46	79.2	15°
	RC65S	53	99.5	15°
	RC65N	58	99.5	15°
	RC80S	53	114.5	15°
	RC80N	53	114.5	15°
	RC100S	59	144.5	15°
	RC100N	59	144.5	15°
	RC120S	61	180	15°
	RC120N	61	180	15°

# 導套 Guide bushes



Machines	Type	Item No	d	L	D	T	Article No		
星辰(西鐵城) CITIZEN	R04	5204	∅ 9.0	38.5	∅ 12.5	M8X0.75	263.001		
	R07	5907	∅ 11.0	52	∅ 14.5	M10X0.75	3134E	3.001	TD-7
	D10,E10,F10,L10	5910	∅ 16.0	59	∅ 20.5	M14X1.0	3260E	8.001	TD10
	B12,F12,C12,A12	5212	∅ 18.0	60	∅ 22.0	M18X1.0	3319E	174.001	SD125R
	B20,M20,L20	5920	∅ 28.0	82	∅ 34.0	M25X1.0	3602E	22.001	TD25S
	L16/20,F16/F20,E20,WF6,206M	5216	∅ 30.0	59	∅ 35.0	M30X1.0		510.001	
	F25,L25,E25,E25J	5725	∅ 34.0	87.5	∅ 41.0	M34X1.0	3733E	451.001	CD25
	L32,M32,G32,E32	5232	∅ 42.0	82	∅ 48.0	M40X1.0		28.01	TD32
史達(星牌) STAR	SW-7	5907	∅ 11.0	52	∅ 14.5	M10X0.75	3134E	3.001	TD-7
	JNC-10,RNC-10,SNC-10	5910	∅ 16.0	59	∅ 20.5	M14X1.0	3260E	8.001	TD10
	SE12,VNC12,SJ15,SNC15	5512	∅ 21.0	58	∅ 24.0	M18X1.0	3438E	450.001	SNC15
	SB16,SR16	5616	∅ 22.0	70.5	∅ 26.0	M20X1.0		487.001	P1653D
	RNC16,SE16,SA16,VNC16,KNC16	5516	∅ 22.0	68	∅ 29.0	M22X1.0			
	SA-16,SR-16	5916	∅ 22.0	68	∅ 29.0	M22X1.0	3455E	39.001	TD20R
	SR20,KNC16,VNC20	5920	∅ 28.0	82	∅ 34.0	M25X1.0	3602E	22.001	TD25S
	JNC16,L16/20,ZNC16,VNC20	5216	∅ 30.0	59	∅ 35.0	M30X1.0		510.001	
津上 TSUGAMI	SCN-25,KJR-25	5725	∅ 34.0	87.5	∅ 41.0	M34X1.0	3733E	451.001	CD25
	JNC32/25,VNC32/25,MR32,SR32	5532	∅ 42.0	82	∅ 49.0	M40X1.0	3827E	28.001	TD32S
	NP-4W	5907	∅ 11.0	52	∅ 14.5	M10X0.75	3134E	3.001	TD-7
	T7,BOO7,BM07	5707	∅ 12.0	52	∅ 15.8	M12X1.0	3149E	261.001	
	L10	5710	∅ 15.0	54	∅ 19.0	M14X1.0			
	NT-11,NP-11	5212	∅ 18.0	60	∅ 22.0	M18X1.0	3319E	174.001	SD125R
	BO12	5616	∅ 22.0	70.5	∅ 26.0	M20X1.0		487.001	P1653D
	NP-17,NP-16,NT-17	5717	∅ 23.0	72	∅ 28.0	M22X1.0		483.001	TSG20R
	NP-20,BS20,BO18,BS18	5720	∅ 30.0	70	∅ 36.0	M28X1.0		486.001	NN20KD
	BO20-CV	5721	∅ 26.0	77	∅ 29.0	M25X1.0			TD26
	BA-26	5726	∅ 33.0	70	∅ 38.0	M30X1.0			
	BA-26L	5724	∅ 32.0	70	∅ 38.0	M30X1.0			
S-25,BS-26	5725	∅ 34.0	87.5	∅ 41.0	M34X1.0	3733E	451.001	CD25	
NP-32	5532	∅ 42.0	82	∅ 49.0	M40X1.0	3827E	28.001	TD32S	
BH38	5738	∅ 48.0	81	∅ 54.0	M46X1.0				

Machines	Type	Item No	d	L	D	T	Article No		
野村 NOMURA	NS-P8410,NS-P8420	5608	∅ 14.0	60.5	∅ 20.0	M14X1.0		480.001	P853D
	NS-P1053,NN-10K,	5610	∅ 16.0	63	∅ 20.0	M14X1.0		481.001	P1053D
	NS-P1653,NS-P1253	5616	∅ 22.0	70.5	∅ 26.0	M20X1.0		487.001	P1653D
	NN-P20,NN-20KF	5620	∅ 30.0	67.5	∅ 35.0	M30X1.0			
	NNC-P2553,NN-25K	5625	∅ 36.0	89	∅ 44.0	M36X1.0			
P-32	5632	∅ 44.0	90	∅ 50.0	M40X1.0				
托尼士 TORNOS	M4,T4,TV	5904	∅ 9.0	44	∅ 12.0	M8X0.75	3077E	1.001	PD-4
	M7	5907	∅ 11.0	52	∅ 14.5	M10X0.75	3134E	3.001	TD-7
	M7,MS7	5908	∅ 13.0	68	∅ 17.0	M13X1.0		45.001	
	R10,M10,R125,MS7	5910	∅ 16.0	59	∅ 20.5	M14X1.0	3260E	8.001	TD10
	R10,M10,R125	5212	∅ 18.0	60	∅ 22.0	M18X1.0	3319E	174.001	SD125R
	M15,R16,RR20	5915	∅ 22.0	68	∅ 29.0	M19X1.0	3454E	13.001	TD20
	M15,R16,RR20	5916	∅ 22.0	68	∅ 29.0	M22X1.0	3455E	39.001	TD20R
	RR20,	5920	∅ 28.0	82	∅ 34.0	M25X1.0	3602E	22.001	TD25S
	M20,M25	5925	∅ 32.0	70.5	∅ 40.0	M32X1.0	3708E	282.001	TSD20
MR32	5932	∅ 44.0	87.5	∅ 53.0	M40X1.0	3835E	27.001		
托尼士 -DECO TORNOS -DECO	DECO 2000-7	5907	∅ 11.0	52	∅ 14.5	M10X0.75	3134E	3.001	TD-7
	DECO 2000-10	5910	∅ 16.0	59	∅ 20.5	M14X1.0	3260E	8.001	TD10
	DECO 2000-13/16	5816	∅ 24.0	61	∅ 29.5	M24X1.0	3507E	61.002	O201
	DECO 2000-20	5820	∅ 28.0	82	∅ 38.0	M25X1.0	3610E	18.001	TD25/167
	DECO 2000-26	5725	∅ 34.0	87.5	∅ 41.0	M34X1.0	3733E	451.001	CD25
	DECO 2000-32	5532	∅ 42.0	82	∅ 49.0	M40X1.0	3827E	28.001	TD32S
韓華 HANWHA	HANEX11,SL12	5212	∅ 18.0	60	∅ 22.0	M18X1.0	3319E	174.001	SD125R
	HANEX17,ML18-G	5916	∅ 22.0	68	∅ 29.0	M22X1.0	3455E	39.001	TD20R
	HANEX20	5920	∅ 28.0	82	∅ 34.0	M25X1.0	3602E	22.001	TD25S
	HANEX25	5725	∅ 34.0	87.5	∅ 41.0	M34X1.0	3733E	451.001	CD25
	SL-32	5532	∅ 42.0	82	∅ 49.0	M40X1.0	3827E	28.001	TD32S
	SL-35,SL-38	5435	∅ 45.0	82	∅ 52.0	M42X1.0			
哈挺 HARDINGE	SL-38HP-II	5438	∅ 46.0	82	∅ 53.0	M45X1.0			
	SL,ST220	5720	∅ 30.0	70	∅ 36.0	M28X1.0		486.001	NN20KD
	ST220	5920	∅ 28.0	82	∅ 34.0	M25X1.0	3602E	22.001	TD25S
德馬吉 DMG	ST225	5725	∅ 34.0	87.5	∅ 41.0	M34X1.0	3733E	451.001	CD25
	GMC20	5820	∅ 28.0	82	∅ 38.0	M25X1.0	3610E	18.001	TD25/167
寶麗金 POLYGYM	DIAMOND 12,12CS	5212	∅ 18.0	60	∅ 22.0	M18X1.0	3319E	174.001	SD125R
	DIAMOND 16,16CS	5616	∅ 22.0	70.5	∅ 26.0	M20X1.0		487.001	P1653D
	DIAMOND 20,20B,20CS,20CSB	5216	∅ 30.0	59	∅ 35.0	M30X1.0		510.001	
	DIAMOND 25,25B,25CS,25CSB	5725	∅ 34.0	87.5	∅ 41.0	M34X1.0	3373E	451.001	CD25
	DIAMOND 32,32B,32CS,32CSB	5232	∅ 42.0	82	∅ 48.0	M40X1.0		28.01	TD32
縉錫 JINN FA	JSL-20	5720	∅ 30.0	70	∅ 36.0	M28X1.0		486.001	NN20KD
	JSL-26	5725	∅ 34.0	87.5	∅ 41.0	M34X1.0	3733E	451.001	CD25
	JSL-32	5532	∅ 42.0	82	∅ 49.0	M40X1.0	3827E	28.001	TD32S
王主 WANG TZYU	SL-1693	5616	∅ 22.0	70.5	∅ 26.0	M20X1.0		487.001	P1653D
	SL-2596	5725	∅ 34.0	87.5	∅ 41.0	M34X1.0	3733E	451.001	CD25
	SL-3295	5232	∅ 42.0	82	∅ 48.0	M40X1.0		28.01	TD32

## 導套內孔選項 Guide bush hole options



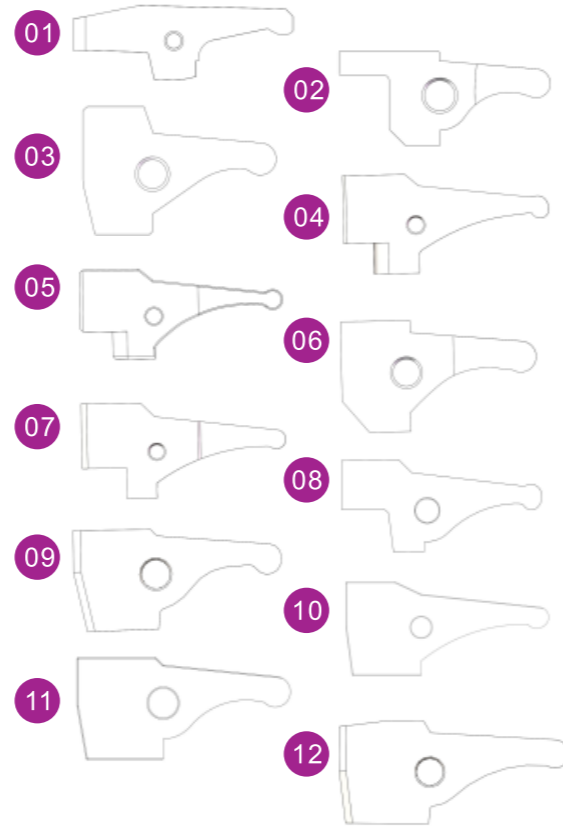
## 開閉爪 Toggle

自動車床開閉爪 Automatic lathe toggle	自動車床開閉爪 Automatic lathe toggle	自動車床開閉爪 Automatic lathe toggle	桌上車床開閉爪 Bench lathe toggle
富士0825 Fuji 0825	島本4# Shimamoto 4#	錡筆15# GF 15#	山榮15# SR 15#
富士加長 Fuji lengthen	島本7# Shimamoto 7#	錡筆20# GF 20#	山榮20# SR 20#
富士0835 Fuji 0835	島本10L Shimamoto 10L	奕東15# WE 15#	先鋒15# SY 15#
富士16# Fuji 16#	島本12# Shimamoto 12#	東本16# TP 16#	先鋒20# SY 20#
富士25# Fuji 25#	野村8# Nomura 8#	洽群15# CC 15#	昇岱15# SD 15#
大和8# Daiwa 8#	野村10# Nomura 10#	洽群20# CC 20#	昇岱25# SD 25#
大和102 Daiwa 102	野村10T Nomura 10T	洽群32# CC 32#	昇岱32# SD 32#
大和801 Daiwa 801	野村10S Nomura 10S	特勞普16# Traub 16#	昇岱42# SD 32#
大和15# Daiwa 15#	野村12# Nomura 12#	特勞普25# Traub 25#	昇岱42# SD 32#
大和10P Daiwa 10P	野村16# Nomura 16#	特勞普30# Traub 30#	詠和15# YB 15#
史達4# STAR 4#	野村NN16 Nomura NN16	特勞普42# Traub 42#	詠和25# YB 25#
史達8# STAR 8#	野村16D Nomura 16D	舜詠15# SU 15#	詠和25N YB 25N
史達10J STAR 10J	野村NN20 Nomura NN20	舜詠25# SU25#	詠和30# YB 30#
史達13# STAR 13#	野村NN20J Nomura NN20J	名陽15# MY 15#	詠和42# YB 42#
史達RNC16(新款) STAR RNC16(New)	野村25# Nomura 25#	名陽20# MY 20#	洽群15# CC 15#
史達RNC16(舊款) STAR RNC16	星辰12# Citizen 12#	托尼士7# Tornos 7#	洽群25# CC 25#
史達RNC16 B軸 STAR RNC16 (B)	星辰12B Citizen 12(B)	托尼士10# Tornos 10#	洽群32# CC 32#
史達SB16 STAR SB16	星辰12BL Citizen 12BL	托尼士CT20# Tornos CT20#	
史達SR20R STAR SR20R	星辰12#新背面 Citizen 12#(New)	焱存15# SHYE TOWEN 15#	
史達SR20R (B軸) STAR SR20R (B)	星辰16# Citizen 16#	焱存20# SHYE TOWEN 20#	
史達SR32# STAR 32#	星辰16B Citizen 16(B)	焱存32# SHYE TOWEN 32#	
津上4# Tugami 4#	星辰20# Citizen 20#	史特龍13# Strohm 13#	
津上7# Tugami 7#	星辰20B Citizen 20(B)	縉錫20#主軸 JF 20#	
津上NP11 Tugami NP11	星辰20/25BL Citizen 20/25BL	縉錫20#主軸 JF 20#	
津上NP17 Tugami NP17	王主15# WZ 15#	縉錫20#副軸 JF 20#(B)	
津上NP17B Tugami NP17(B)	王主20# WZ 20#	縉錫32AS180B JF 32AS180B	
津上NP20 Tugami NP20	王主25# WZ 25#	縉錫JSL42AB JF JSL42AB	
津上BO203 Tugami BO203	王主32# WZ 32#	進發25# JF25#	
津上BO205 Tugami BO205	王主1693主軸 WZ 1693	進發32# JF32#	
津上BO206 Tugami BO206	王主1693B軸 WZ 1693(B)	連勝25# LZ 25#	
津上BO12 Tugami BO12	程泰SW20#主軸 GOODWAY SW20	實麗金20# Polygim 20#	
津上S25 Tugami S25	程泰20#副軸 GOODWAY SW20(B)	瑞隆15# RUEY LONG 15#	
津上BA26 Tugami BA26	程泰SK38#主軸 GOODWAY SK38#	瑞隆25# RUEY LONG 25#	
津上BO385 Tugami BO385	利晟32# Lisheng 32#	東洋15# TOYO 15#	
宮野25# Miyano 25#	山鈴15# SH15#	連博32# LB 32#	
宮野42# Miyano 42#	山鈴20# SH20#		

## CNC電腦開閉爪 CNC Toggle

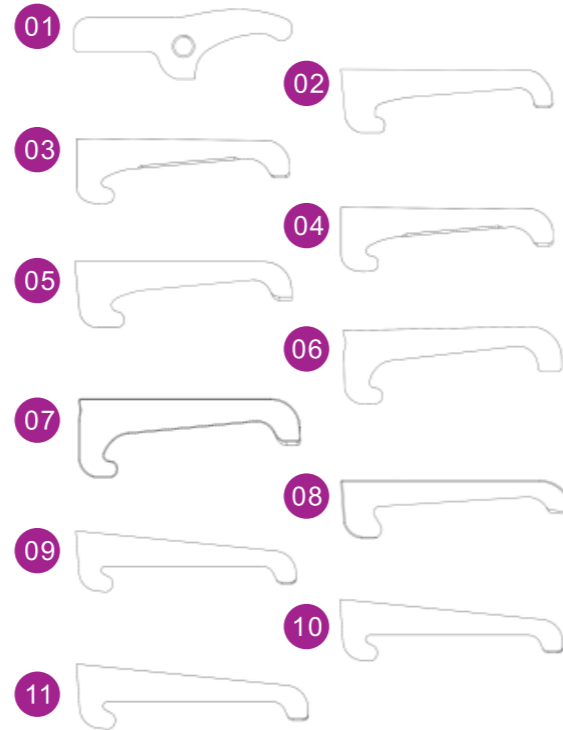
## 史達系列(STAR)

編號 Number	機型(Model)	長度(L)	高度(H)	厚度(T)	孔徑(Ø)
1	8#	53	17.1	6	4
2	10J	40	18	6	6
3	12#	39	25.6	8	6
4	RNC16(舊)	67.5	32	10	6
5	RNC16(新)(RNC16 New)	68	32	10	6
6	RNC16副軸(RNC16 B)	39	22	8	6
7	SB16#	68	31.5	10	6
8	20#	68	31	10	8
9	20#副軸	50	25.6	12	8
10	SR20R主軸	78	35.6	12	8
11	SR20副軸	57	27	12	8
12	32#	67.3	29.9	12	8



## 津上系列(TSUGAMI)

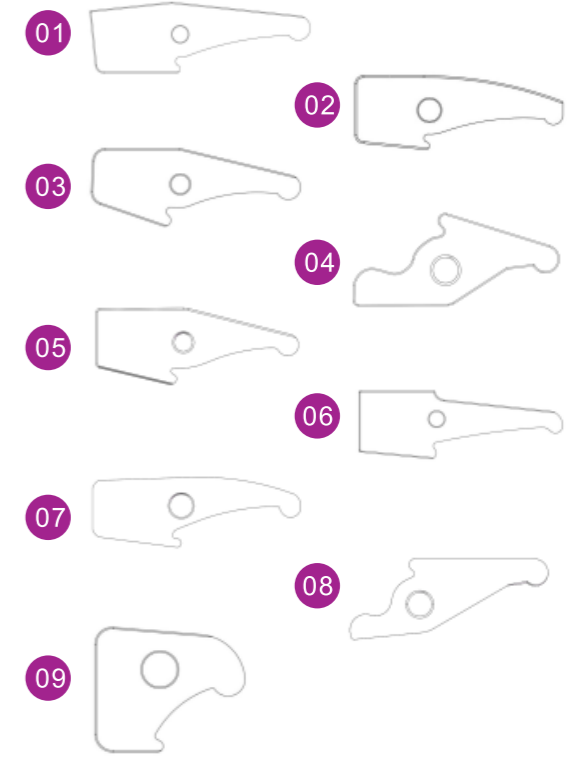
編號 Number	機型(Model)	長度(L)	高度(H)	厚度(T)	孔徑(Ø)
1	T7	59	18	7	5
2	BO12	57	17	8	
3	NP17	57	17	12	
4	BO18	57	17	12	
5	BO20	57	17	12	
6	BO205	57	19	12	
7	BO206	57	20	12	
8	S20背軸	57	14	8	
9	BO25	86	22	12	
10	BA26	86	22	12	
11	BO385	86	22	12	



## CNC電腦開閉爪 CNC Toggle

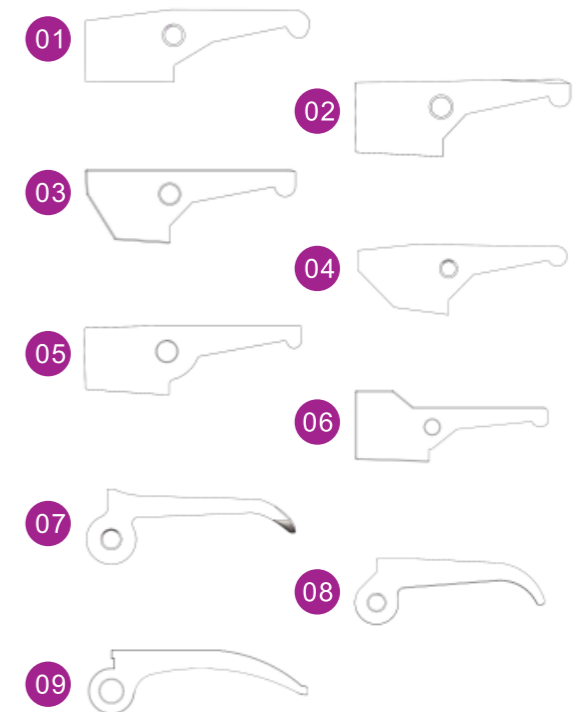
## 星辰(西鐵城)系列(CITIZEN)

編號 Number	機型(Model)	長度(L)	高度(H)	厚度(T)	孔徑(Ø)
1	B12	54	17.2	6	4
2	B12#副軸(舊)(B12# B)	36.3	12.8	4	4
3	B12#副軸(新)(B12# B)	45	17	6	4
4	BL12	41	23	8	6
5	16#	55	21	8	6
6	16#副軸(16# B)	54	18	6	4
7	20#	73	24.4	10	8
8	BL20	51	20	8	6
9	BL20副軸(BL20 B)	25.5	21.4	8	6



## 野村系列(NOMURA)

編號 Number	機型(Model)	長度(L)	高度(H)	厚度(T)	孔徑(Ø)
1	8#	50.5	16	6	4
2	10#	50.3	17.4	7	4.5
3	10T	50.3	17.4	7	4.5
4	10S	53	17	7	4.5
5	P16	64.6	20.3	8	6
6	NN16	58.6	21.3	7	4.5
7	NN20	69.5	24	8	6
8	NN20J	70	25	8	6
9	25#	96	28.7	14	10



# 艾恩司送料夾 LNS Finger chuck



產品代號 Product code	型號 Model	內孔尺寸 ID	外徑 OD	長度 L	牙規 Tooth gaugeL	編號 Numberingr
FL01	4#	0.8~4.0mm	5mm	98mm	M4P0.7	1
FL02	4-7#	0.8~4.0mm	7mm	98mm	M4P0.7	2
FL02	4-7#	4.1~6.0mm	7mm	98mm	M4P0.7	2
FL02	4-7#	2.0~5.5mm	7mm	98mm	M4P0.7	2
FL03	4#	0.8~4.0mm	5mm	28mm	M4P0.7	3
FL04	4-7#	1.5~6.0mm	7mm	28mm	M4P0.7	4
FL04	7#	1.3~6.0mm	7mm	50mm	M4P0.7	5
FL05	7#	1.3~6.5mm	8mm	50mm	M4P0.7	5
FL05	7#	6.6~7.0mm	9mm	50mm	M4P0.7	5
FL06	8.5#	1.5~7.8mm	9.5mm	45mm	M5P0.8	6
FL07	8.5#	7.9~8.5mm	10mm	45mm	M5P0.8	6
FL07	8.5#	3.0~10.5mm	12mm	45mm	M5P0.8	7
FL07	8.5#	10.8~11.0mm	13mm	45mm	M5P0.8	8
FL07	8.5#	11.5~12.0mm	14mm	45mm	M5P0.8	8
FL08	8.5#	12.5~13.0mm	15mm	45mm	M5P0.8	8
FL09	8.5#	13.5mm	15.5mm	45mm	M5P0.8	8
FL10	20#	2.5~13.0mm	15mm	60mm	M9P1.0	9
FL10	20#	11.5~15.1mm	18mm	60mm	M9P1.0	10
FL10	20#	15.2~16.0mm	19mm	60mm	M9P1.0	10
FL10	20#	16.5~18.0mm	20mm	60mm	M9P1.0	10
FL10	20#	18.5~19.0mm	22mm	60mm	M9P1.0	11
FL11	20#	19.5~21.0mm	24mm	60mm	M9P1.0	11
FL11	20#	21.5~22.0mm	25mm	60mm	M9P1.0	11
FL11	XT326	18.0~19.5mm	22mm	60mm	M9P1.0	12
FL11	XT326	20.0~21.0mm	23mm	60mm	M9P1.0	12
FL12	XT326	21.5~23.0mm	26mm	60mm	M9P1.0	12
FL13	XT326	24.0~26.0mm	28mm	60mm	M9P1.0	12
FL14	SN20#	3.0~18.0mm	20mm	60mm	M10P1.0	13
FL15	SN25#	16.5~23.0mm	25mm	60mm	M10P1.0	14
FL16	SN27#	16.5~25.0mm	27mm	60mm	M10P1.0	14
FL17	SN32#	23.5~28.0mm	32mm	70mm	M17P1.0	15
FL18	SN35#	28.5~33.0mm	35mm	80mm	M25P1.5	16
FL19	SN37#	31.0~34.0mm	37mm	80mm	M25P1.5	17
FL20	SN38#	31.0~35.0mm	38mm	80mm	M25P1.5	17
FL21	SN42#	31.5~40.0mm	42mm	80mm	M25P1.5	17
FL22	SN45#	38.5~42.2mm	45mm	80mm	M25P1.5	17
FL23	SN51#	42.5~48.0mm	51mm	80mm	M25P1.5	18
FL22	32#	4.0~30.0mm	32mm	80mm	M25P1.5	15
FL23	40#	21.0~36.5mm	40mm	80mm	M25P1.5	17

## 艾恩司中軸套 LNS Revolving tip



產品代號 Product code	型號 Model	外徑 OD	長度 L	料夾端牙規 Tooth gaugeL	推桿端牙規 Push rod tooth gauge	編號 Numberingr
RL01	4#	5mm	77.1mm	M4P0.7	M4P0.7	1
RL02	4-7#	7mm	77.2mm	M4P0.7	M4P0.7	2
RL03	7#	7mm	65.3mm	M4P0.7	M6P0.75	3
RL04	7#	7mm	65.3mm	M4P0.7	M6*1.0	3
RL05	7#	8mm	65.3mm	M4P0.7	M6P0.75	3
RL06	7#	8mm	65.3mm	M4P0.7	M6*1.0	3
RL07	7#	8mm	61.5mm	M4P0.7	M6P0.75	4
RL08	7#	7mm	57.5mm	M4P0.7	M6P0.75	5
RL09	7.5#	7.5mm	57.5mm	M4P0.7	M6*1.0	5
RL10	7#	8mm	57.5mm	M4P0.7	M6P0.75	5
RL11	8.5#	9.5mm	63.5mm	M5P0.8	M7P0.75	6
RL12	8.5#	9.5mm	66.3mm	M5P0.8	M7P0.75	6
RL13	8.5#	10mm	59.5mm	M5P0.8	M7P0.75	7
RL14	8.5#	10mm	61.1mm	M5P0.8	M7P0.75	7
RL15	8.5#	9mm	64.5mm	M5P0.8	M7P0.75	8
RL16	8.5#	10mm	64.5mm	M5P0.8	M7P0.75	8
RL17	12#	12mm	64.5mm	M5P0.8	M7P0.75	9
RL18	12#	12mm	64.5mm	M5P0.8	M8P1.0	9
RL19	20#	15mm	92.2mm	M9P1.0	M12P1.0	10
RL20	20#	15mm	92.2mm	M9P1.0	M12P1.0	11
RL21	20#	15mm	92.2mm	M9P1.0	M12P1.25	12
RL22	20#	20mm	92.2mm	M9P1.0	M12P1.25	13
RL23	25#	25mm	92.2mm	M9P1.0	M12P1.25	14
RL24	20#	20.5mm	207.5mm	M10P1.0	PIN=4.0mm	15
RL25	20#	20.5mm	193.5mm	M10P1.0	M12P1.25	
RL26	22#	22.5mm	207.5mm	M10P1.0	PIN=4.0mm	15
RL27	23#	22.5mm	207.5mm	M10P1.0	PIN=4.0mm	15
RL28	23#	22.5mm	193.5mm	M10P1.0	M12P1.25	
RL29	25#	25.5mm	207.5mm	M10P1.0	PIN=5.0mm	16
RL30	25#	25.5mm	193.5mm	M10P1.0	M16P1.5	
RL31	27#	27.5mm	207.5mm	M10P1.0	PIN=5.0mm	16
RL32	27#	27.5mm	193.5mm	M10P1.0	M16P1.5	
RL33	32#	32.5mm	165.0mm	M25P1.5	PIN=5.0mm	17
RL34	32#	32.5mm	165.0mm	M25P1.5	M27	18
RL35	35#	35.5mm	165.0mm	M25P1.5	PIN=6.0mm	17
RL36	35#	35.5mm	165.0mm	M25P1.5	M29	18
RL37	37#	37.5mm	165.0mm	M25P1.5	PIN=6.0mm	17
RL38	37#	37.5mm	165.0mm	M25P1.5	M29	18
RL39	38#	38.5mm	165.0mm	M25P1.5	PIN=6.0mm	17
RL40	38#	38.5mm	165.0mm	M25P1.5	M29	18
RL41	42#	41.5mm	165.0mm	M25P1.5	PIN=6.0mm	19
RL42	42#	41.5mm	165.0mm	M25P1.5	M34	20
RL43	45#	45.5mm	165.0mm	M25P1.5	PIN=6.0mm	19
RL44	45#	45.5mm	165.0mm	M25P1.5	M38	20
RL45	51#	51.5mm	165.0mm	M25P1.5	PIN=6.0mm	21
RL46	51#	51.5mm	165.0mm	M25P1.5	M42	22

## 艾恩司零件 LNS Parts



## 中義送料夾 GIMCO (IEMCA) Finger chuck



產品代號 Product code	型號 Model	內孔尺寸 ID	外徑 OD	長度 L	牙規 Tooth gaugeL	圖號 Drawing number
FIG01	4#	0.8~4mm	5mm	98mm	M4P0.7	1
FIG02	5#	2~4mm	5mm	37mm	M4P0.5	2
FIG03	4-7#	0.8~4mm	7mm	98mm	M4P0.7	3
FIG04	4-7#	4.1~6mm	7mm	98mm	M4P0.7	3
FIG05	4-7#	2.~5.5mm	7mm	98mm	M4P0.7	3
FIG06	7.5#	2~6mm	7.5mm	40mm	M5P0.8	4
FIG07	10#	1.5~8.5mm	10mm	42mm	M6P0.75	5
FIG08	12#	1.5~10.5mm	12mm	42mm	M7P0.75	6
FIG09	15#	2~13mm	15mm	42mm	M8P1.0	7
FIG10	16#	12~14mm	16mm	42mm	M8P1.0	7
FIG11	20#	3~18.5mm	20mm	60mm	M10P1.0	8
FIG12	23#	16~21mm	23mm	60mm	M10P1.0	9
FIG13	25#	16.5~23mm	25mm	60mm	M10P1.0	10
FIG14	27#	16.5~25.5mm	27mm	60mm	M10P1.0	9
FIG15	32#	4~30mm	32mm	80mm	M25P1.5	11
FIG16	35#	28.5~32mm	35mm	80mm	M25P1.5	12
FIG17	37#	31~34mm	37mm	80mm	M25P1.5	13
FIG18	38#	31~35mm	38mm	80mm	M25P1.5	13
FIG19	40#	21~36.5mm	40mm	80mm	M25P1.5	13
FIG20	42#	31.5~40mm	42mm	80mm	M25P1.5	13
FIG21	45#	38.5~42.2mm	45mm	80mm	M25P1.5	13
FIG22	51#	42.5~48mm	51mm	80mm	M25P1.5	14

## 中義中軸套 GIMCO(IEMCA) Revolving tip



產品代號 Product code	型號 Model	外徑 OD	全長 L	料夾端牙規 Tooth gauge	推桿端牙規 Push rod tooth gauge	圖號 Drawing number
RG01	7.5#	7.5mm	151mm	M5P0.5	M6P0.75	1
RG02	10#	10.5mm	137.5mm	M6P0.75	M8P1.0	2
RG03	10#	10.5mm	167mm	M6P0.75	PIN=3.0	3
RG04	12#	12.5mm	173mm	M7P0.75	PIN=3.0	4
RG05	15#	15.5mm	195mm	M8P1.0	PIN=4.0	5
RG06	16#	16.5mm	195mm	M8P1.0	PIN=4.0	5
RG07	18#	18.5mm	195mm	M8P1.0	PIN=4.0	5
RG08	19#	19.5mm	195mm	M8P1.0	PIN=4.0	5
RG09	20#	20.5mm	207.5mm	M10P1.0	PIN=4.0	6
RG10	22#	22.5mm	207.5mm	M10P1.0	PIN=4.0	6
RG11	23#	23.5mm	207.5mm	M10P1.0	PIN=4.0	6
RG12	25#	25.5mm	207.5mm	M10P1.0	PIN=5.0	7
RG13	27#	27.5mm	207.5mm	M10P1.0	PIN=5.0	7
RG14	30#	30.5mm	165mm	M25P1.5	PIN=5.0	8
RG15	32#	32.5mm	165mm	M25P1.5	PIN=5.0	8
RG16	35#	35.5mm	165mm	M25P1.5	PIN=5.0	9
RG17	37#	37.5mm	165mm	M25P1.5	PIN=5.0	9
RG18	38#	38.5mm	165mm	M25P1.5	PIN=5.0	9
RG19	40#	40.5mm	165mm	M25P1.5	PIN=6.0	10
RG20	42#	42.5mm	165mm	M25P1.5	PIN=6.0	10
RG21	45#	45.5mm	165mm	M25P1.5	PIN=6.0	10
RG22	51#	51.5mm	165mm	M25P1.5	PIN=6.0	11
RG23	51#	51.5mm	221mm	M25P1.5	PIN=6.0	12

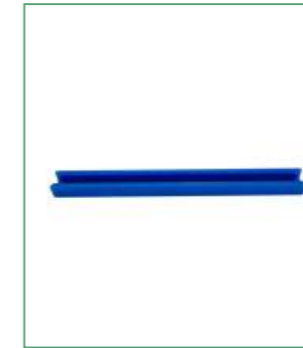
## 中義零件 GIMCO (IEMCA) Parts



防震塊  
Anti-vibration block



防震輪  
Anti-vibration wheel



膠管  
Plastic pipe



手控盒  
Manual box



手控盒線  
Manual control box line



轉接軸  
Adapter shaft

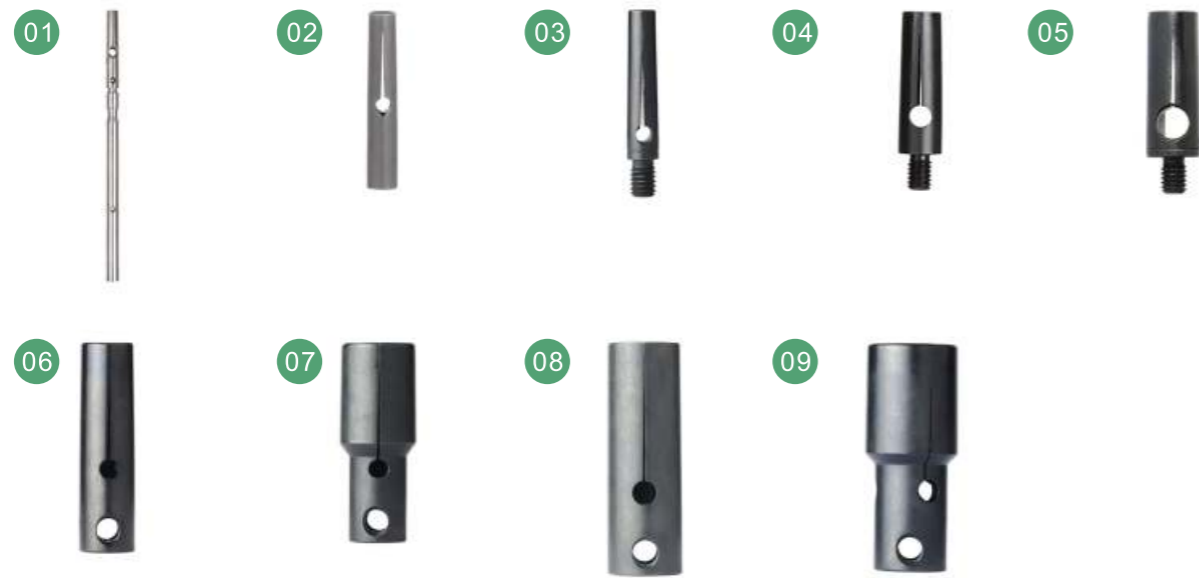


轉接軸  
Adapter shaft



轉接軸  
Adapter shaft

## 育良送料夾 IKURA Finger chuck



產品代號 Product code	型號 Model	內孔尺寸 ID	外徑 OD	長度 L	牙規 Tooth gaugeL	編號 Numberingr
FI01	4#	0.8~4.0mm	5mm	98mm	M4P0.7	1
FI02	4#	0.8~4.0mm	5mm	28mm	M4P0.7	2
FI03	7#	1.5~6.0mm	7mm	40mm	M6P1.0	3
FI04	8#	1.5~6.5mm	8mm	40mm	M6P1.0	3
FI05	10#	1.5~8.5mm	10mm	40mm	M6P1.0	4
FI06	12#	3~10.5mm	12mm	40mm	M6P1.0	5
FI07	15#	3~13.0mm	15mm	55mm	M4P0.7	6
FI08	20#	3~18.0mm	20mm	55mm	M4P0.7	7
FI09	25#	5~23.0mm	25mm	76mm	M4P0.7	8
FI10	32#	5~28.0mm	32mm	76mm	M5P0.8	9

## 育良中軸套 IKURA Revolving tip



產品代號 Product code	型號 Model	外徑 OD	長度 L	料夾端牙規 Tooth gaugeL	推桿端牙規 Push rod tooth gauge	編號 Numberingr
RI01	4#	5mm	77.1mm	M4P0.7	M4P0.7	1
RI02	7#	7mm	67.5mm	M6P1.0	M6P1.0	2
RI03	8#	8mm	67.5mm	M6P1.0	M6P1.0	2
RI04	10#	10mm	67.5mm	M6P1.0	M6P1.0	3
RI05	12#	12mm	67.5mm	M6P1.0	M6P1.0	4
RI06	15#	15mm	119.5mm	PIN=6.0	M12P1.25	5
RI07	16#	16.3mm	119.5mm	PIN=6.0	M12P1.25	6
RI08	17#	17mm	119.5mm	PIN=6.0	M12P1.25	6
RI09	19#	19mm	119.5mm	PIN=6.0	M12P1.25	6
RI10	20#	20mm	119.5mm	PIN=6.0	M12P1.25	6
RI11	21#	20.5mm	119.5mm	PIN=6.0	M12P1.25	6
RI12	22#	21mm	119.5mm	PIN=6.0	M12P1.25	6
RI13	25#	25mm	160.3mm	PIN=8.0	M20P1.5	7
RI14	32#	32mm	160.3mm	PIN=8.0	M20P1.5	8

### 錯羅送料夾 PRO Finger chuck



產品代號 Product code	型號 Model	內孔尺寸 ID	外徑 OD	長度 L	牙規 Tooth gaugeL	圖號 Drawing number
FP01	4#	0.8~4mm	5mm	98mm	M4P0.7	1
FP02	4-7#	0.8~4mm	7mm	98mm	M4P0.7	2
FP03	4-7#	4.1~6mm	7mm	98mm	M4P0.7	2
FP04	4-7#	2~5.5mm	7mm	98mm	M4P0.7	2
FP05	10#	1.5~8.5mm	10mm	42mm	M6P0.75	3
FP06	12#	1.5~10.5mm	12mm	42mm	M7P0.75	4
FP07	15#	2~13mm	15mm	42mm	M8P1.0	5
FP08	16#	12~14mm	16mm	42mm	M8P1.0	5
FP09	16#	3~13mm	15mm	60mm	M12P1.0	6
FP10	16#	12~14mm	16mm	60mm	M12P1.0	6
FP11	20#	3~18.5mm	20mm	60mm	M10P1.0	7
FP12	20#	3~18mm	20mm	60mm	M12P1.0	7
FP13	23#	16~21mm	23mm	60mm	M10P1.0	8
FP14	25#	16.5~23mm	25mm	60mm	M10P1.0	9
FP15	25#	5~19.5mm	23mm	80mm	M18P1.0	9
FP16	25#	20~23mm	25mm	80mm	M18P1.0	10
FP17	27#	16.5~25.5mm	27mm	60mm	M10P1.0	9
FP18	32#	4~30mm	32mm	80mm	M25P1.5	11
FP19	35#	28.5~32mm	35mm	80mm	M25P1.5	12
FP20	37#	31~34mm	37mm	80mm	M25P1.5	13
FP21	38#	31~35mm	38mm	80mm	M25P1.5	13
FP22	40#	21~36.5mm	40mm	80mm	M25P1.5	13
FP23	42#	31.5~40mm	42mm	80mm	M25P1.5	13
FP24	45#	38.5~42.2mm	45mm	80mm	M25P1.5	13
FP25	51#	42.5~48mm	51mm	80mm	M25P1.5	14

### 錯羅中軸套 PRO Revolving tip



產品代號 Product code	型號 Model	外徑 OD	長度 L	料夾端牙規 Tooth gaugeL	推桿端牙規 Push rod tooth gauge	編號 Numbering
RP01	10#	10.5mm	167mm	M6P0.75	PIN=3.0	1
RP02	12#	12.5mm	173mm	M7P0.75	PIN=3.0	2
RP03	12#	12mm	113.5mm	M7P0.75	M7P0.75	3
RP04	15#	15.5mm	195mm	M8P1.0	PIN=4.0	4
RP05	16#	16.5mm	195mm	M8P1.0	PIN=4.0	4
RP06	16#	16mm	147mm	M12P1.0	M10P1.0	5
RP07	18#	18.5mm	195mm	M8P1.0	PIN=4.0	4
RP08	19#	19.5mm	195mm	M8P1.0	PIN=4.0	4
RP09	20#	20.5mm	207.5mm	M10P1.0	PIN=4.0	6
RP10	22#	22.5mm	207.5mm	M10P1.0	PIN=4.0	6
RP11	23#	23.5mm	207.5mm	M10P1.0	PIN=4.0	6
RP12	20#	20mm	145mm	M12P1.0	M10P1.0	7
RP13	25#	25.5mm	207.5mm	M10P1.0	PIN=5.0	8
RP14	27#	27.5mm	207.5mm	M10P1.0	PIN=5.0	8
RP15	25#	26mm	145mm	M18P1.0	M14P1.0	9
RP16	30#	30.5mm	165mm	M25P1.5	PIN=5.0	10
RP17	32#	32.5mm	165mm	M25P1.5	PIN=5.0	10
RP18	35#	35.5mm	165mm	M25P1.5	PIN=5.0	11
RP19	37#	37.5mm	165mm	M25P1.5	PIN=5.0	11
RP20	38#	38.5mm	165mm	M25P1.5	PIN=5.0	11
RP21	40#	40.5mm	165mm	M25P1.5	PIN=6.0	12
RP22	42#	42.5mm	165mm	M25P1.5	PIN=6.0	12
RP23	45#	45.5mm	165mm	M25P1.5	PIN=6.0	12
RP24	51#	51.5mm	165mm	M25P1.5	PIN=6.0	13

## 錯羅零件 PRO Parts



手控盒  
Manual box



轉接軸  
Adapter shaft



轉接軸(快拆型)  
Adapter shaft  
(quick release type)



轉接軸  
Adapter shaft



轉接軸  
Adapter shaft



防震塊  
Anti-vibration block

## 富豪零件 BARLOAD Parts



轉接軸  
Adapter shaft



轉接軸  
Adapter shaft



轉接軸  
Adapter shaft

## ALPS料夾 ALPS Finger chuck

01



02



03



04



產品代號 Product code	型號 Model	內孔尺寸 ID	外徑 OD	長度 L	牙規 Tooth gaugeL	編號 Numberingr
FA01	20#	3~12.7mm	15mm	75mm	M10P1.0	1
FA02	20#	13~15mm	18mm	75mm	M10P1.0	2
FA02	20#	15.5~16mm	19mm	75mm	M10P1.0	2
FA02	20#	16.5~18mm	20mm	75mm	M10P1.0	2
FA03	32#(P)	8~18mm	24mm	110mm		3
FA03	32#(P)	18.5~19mm	26mm	110mm		3
FA04	32#(P)	19.5~26.5mm	32mm	110mm		4
FA04	32#(P)	27~29.5mm	35mm	110mm		4
FA04	32#(P)	30~33mm	38mm	110mm		4
FA04	32#(P)	33.5~36mm	42mm	110mm		4

## ALPS中軸套 ALPS Revolving tip

01



02



03



產品代號 Product code	型號 Model	外徑 OD	長度 L	料夾端牙規 Tooth gaugeL	推桿端牙規 Push rod tooth gauge	編號 Numberingr
RA01	12#	12mm	82.2mm	M6P1.0	M8	1
RA02	16#	16mm	70.1mm	M10P1.0	M14P1.0	2
RA03	20#	20mm	72.2mm	M10P1.0	M16P1.0	3

## 富豪送料夾 BARLOAD Finger chuck



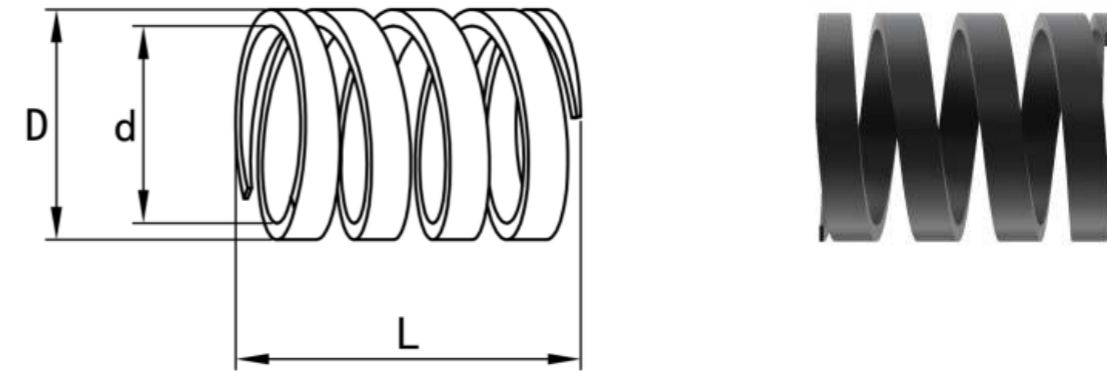
產品代號 Product code	型號 Model	內孔尺寸 ID	外徑 OD	長度 L	牙規 Tooth gaugeL	編號 Numberingr
FB01	4#	0.8~4.0	5	98mm	M4P0.7	1
FB02	4-7#	0.8~4.0		98mm	M4P0.7	2
FB02	4-7#	4.1~6.0	7	98mm	M4P0.7	2
FB03	4#	0.8~4.0	5	28mm	M4P0.7	3
FB04	4-7#	1.5~6.0	7	28mm	M4P0.7	4
FB05	7#	1.3~6.0	7	50mm	M4P0.7	5
FB05	7#	1.3~6.5	8	50mm	M4P0.7	5
FB05	7#	6.6~7.0	9	50mm	M4P0.7	5
FB06	8.5#	1.5~7.8	9.5	45mm	M5P0.8	6
FB06	8.5#	7.9~8.5	10	45mm	M5P0.8	6
FB07	8.5#	3.0~10.5	12	45mm	M5P0.8	7
FB08	8.5#	10.8~11.0	13	45mm	M5P0.8	8
FB08	8.5#	11.5~12.0	14	45mm	M5P0.8	8
FB08	8.5#	12.5~13.0	15	45mm	M5P0.8	8
FB08	8.5#	13.5	15.5	45mm	M5P0.8	8
FB09	20#	2.5~13.0	15	60mm	M9P1.0	9
FB10	20#	11.5~15.1	18	60mm	M9P1.0	10
FB10	20#	15.2~16.0	19	60mm	M9P1.0	10
FB10	20#	16.5~18.0	20	60mm	M9P1.0	10
FB11	20#	18.5~19.0	22	60mm	M9P1.0	11
FB11	20#	19.5~21.0	24	60mm	M9P1.0	11
FB11	20#	21.5~22.0	25	60mm	M9P1.0	11
FB12	XT326	18.0~19.5	22	60mm	M9P1.0	12
FB12	XT326	20.0~21.0	23	60mm	M9P1.0	12
FB12	XT326	21.5~23.0	26	60mm	M9P1.0	12
FB12	XT326	24.0~26.0	28	60mm	M9P1.0	12
FB13	SN20#	3.0~18.0	20	60mm	M10P1.0	13
FB14	SN25#	16.5~23.0	25	60mm	M10P1.0	14
FB15	SN27#	16.5~25.0	27	60mm	M10P1.0	14
FB16	SN32#	23.5~28.0	32	70mm	M17P1.0	15
FB17	SN35#	28.5~33.0	35	80mm	M25P1.5	16
FB18	SN37#	31.0~34.0	37	80mm	M25P1.5	17
FB19	SN38#	31.0~35.0	38	80mm	M25P1.5	17
FB20	SN42#	31.5~40.0	42	80mm	M25P1.5	17
FB21	SN45#	38.5~42.2	45	80mm	M25P1.5	17
FB22	SN51#	42.5~48.0	51	80mm	M25P1.5	18
FB23	32#	4.0~30.0	32	80mm	M25P1.5	15
FB24	40#	21.0~36.5	40	80mm	M25P1.5	17

## 富豪中軸套 BARLOAD Revolving tip



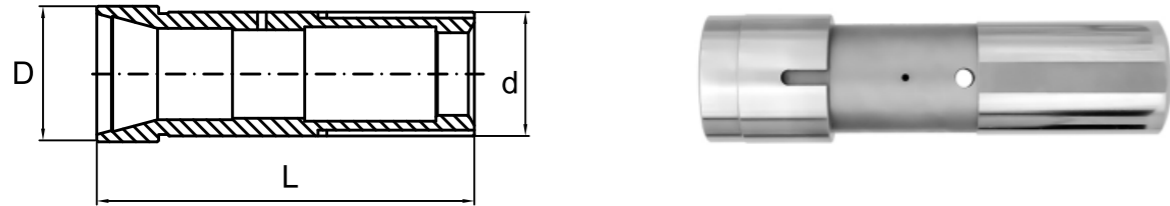
產品代號 Product code	型號 Model	外徑 OD	長度 L	料夾端牙規 Tooth gauge L	推桿端牙規 Push rod tooth gauge	編號 Numbering
RB01	4#	5mm	77.1mm	M4P0.7	M4P0.7	1
RB02	4-7#	7mm	77.2mm	M4P0.7	M4P0.7	2
RB03	7#	7mm	65.3mm	M4P0.7	M6P0.75	3
RB04	7#	7mm	65.3mm	M4P0.7	M6*1.0	3
RB05	7#	8mm	65.3mm	M4P0.7	M6P0.75	3
RB06	7#	8mm	65.3mm	M4P0.7	M6*1.0	3
RB07	7#	8mm	61.5mm	M4P0.7	M6P0.75	4
RB08	7#	7mm	57.5mm	M4P0.7	M6P0.75	5
RB09	7.5#	7.5mm	57.5mm	M4P0.7	M6*1.0	5
RB10	7#	8mm	57.5mm	M4P0.7	M6P0.75	5
RB11	8.5#	9.5mm	63.5mm	M5P0.8	M7P0.75	6
RB12	8.5#	9.5mm	66.3mm	M5P0.8	M7P0.75	6
RB13	8.5#	10mm	59.5mm	M5P0.8	M7P0.75	7
RB14	8.5#	10mm	61.1mm	M5P0.8	M7P0.75	7
RB15	8.5#	9mm	64.5mm	M5P0.8	M7P0.75	8
RB16	8.5#	10mm	64.5mm	M5P0.8	M7P0.75	8
RB17	12#	12mm	64.5mm	M5P0.8	M7P0.75	9
RB18	12#	12mm	64.5mm	M5P0.8	M8P1.0	9
RB19	15#	15.5mm	182.5mm	M9P1.0	PIN=4.0mm	10
RB20	20#	20.5mm	207.5mm	M10P1.0	PIN=4.0mm	11
RB21	25#	25.5mm	207.5mm	M10P1.0	PIN=5.0mm	12
RB22	32#	32.5mm	165.0mm	M25P1.5	PIN=5.0mm	13

## CNC彈簧 Spring



產品代號 Product code	最大外徑(D)	內孔直徑(d)	全長(L)
SP-01	36.8	33	72.5
SP-02	32.6	29	62
SP-03	36.8	33.6	75
SP-04	25.9	21	31
SP-05	29.9	26.2	52
SP-06	25.7	22	46
SP-07	32.5	28.8	32
SP-08	36.6	32.6	58
SP-09	32.8	28.7	32
SP-10	27.9	23.9	35
SP-11	32.5	28.5	35
SP-12	27.5	23.9	35
SP-13	27.9	24	34
SP-14	19.9	16.4	35
SP-15	23.6	19	30
SP-16	36.8	33	45
SP-17	36.8	33.5	70
SP-18	15.9	13.5	32.5
SP-19	15.8	13.5	30.7
SP-20	19.6	17	30
SP-21	19.6	17	26

## 錐套 Cone sleeve



	品名	ØD	L	Ød
星辰錐套	R04主軸錐套	14	66	
	星辰B12主軸錐套	24.2	89	23
	星辰B12背軸錐套	28.3	108.3	28
	星辰A16主軸錐套	33	110	28
	星辰L16主軸錐套	42	104	35
	星辰A20主軸錐套	42	132	42
	星辰A20背軸錐套	44	129	40
	星辰A20錐套(L51620U920B-T)	41	126	35
	星辰A20錐套(L51620U920Z-7K024-M)	41	103	35
	星辰A20錐套(A320NU920Z-7A0012Z)	42	132	42
	星辰A320NU930Z(L25)	46	128	41.8

	品名	ØD	L	Ød
津上錐套	T7主軸錐套	19	77.2	14
	BO125主軸錐套	35	88	31
	BO125副軸錐套	38	96.3	36
	BO20主軸錐套	40	93	36
	BO20主軸錐套	46	103	35
	S20主軸錐套	42	104.4	35
	BO325背軸錐套	47	135	44.8
	BM16背軸錐套	38	106.5	28

	品名	ØD	L	Ød
STAR錐套	RNC16主軸錐套	41.9	87	29
	SR20主軸錐套	43.5	110	35

	品名	ØD	L	Ød
TORNOS錐套	MS-7主軸錐套	23.8	85	18
	D13主軸錐套	30	69	30
	R32主軸錐套	54	122	45

## CNC車床零件 CNC Lathe parts



變徑套  
Change outer diameter sleeves



車床主軸芯  
Lathe spindle



導套外襯套  
Guide bushing outer bushing



訂製鋸片柄  
Customized saw blade handle



動力軸心  
Power axis



動力軸心  
Power axis



防油蓋  
Oil proof cover



滑套  
sliding sleeve



津上出水壓刀塊  
Tsugami water pressure knife block



鋸片柄  
Saw blade handle



卡爪固定座  
Claw holder



拉桿  
Tie rod



螺帽  
Nut



螺帽  
Nut



筒夾適配器  
Collet adapter



星辰出水壓刀塊  
Citizen outlet water pressure knife block

名陽機自動車床零件 MYLAS Machine automatic lathe parts

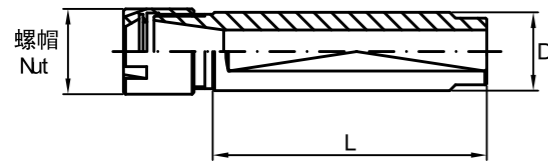
1017+1018滑輪(陀螺) Pulley (gyro)	1019+1020軸承殼螺帽 Bearing shell nut	1022固定螺絲 Fixing screws	1024離合銷 Clutch pin	1027離合座螺帽 Clutch seat nut
1028離合固定座 Clutch mount	1031固定銷 Fixed pin	2002鋼套 Steel sleeve	2003阻臂軸 Resistance arm shaft	2012固定螺絲 Fixing screws
2022b雙心軸銅套 Double mandrel copper sleeve	2022雙心座銅套 Double heart seat copper sleeve	2023b1鑽孔軸銅套 Drilling shaft copper sleeve	2023b鑽孔軸銅套 Drilling shaft copper sleeve	2023鑽孔軸銅套 Drilling shaft copper sleeve
2037下齒輪 Lower gear	2040中間齒輪 Intermediate gear	2042攻牙齒輪 Tapping tooth wheel	2047固定螺絲 Fixing screws	2057固定螺帽 Fixed nut

名陽機自動車床零件 MYLAS Machine automatic lathe parts

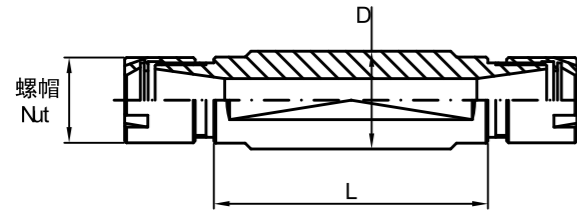
2058鑽孔軸螺帽 Drilling shaft nut	3002銅套 Copper sleeve	3006傳動齒輪 Transmission gear	3009離合齒輪 Clutch gear	3010傳動齒輪 Transmission gear
3011主動齒輪 Driving gear	3014調整螺絲 Adjusting screw	3016頂心 Top heart	3027離合齒輪 Clutch gear	3030離合支軸 Clutch fulcrum
3032頂心 Top heart	3044 s型版 Type s	5017牽引塊固定螺絲 Traction block fixing screw	5019調整桿頂軸 Adjusting rod top shaft	5048傳動臂軸螺絲 Drive arm shaft screw
5069固定螺絲 Fixing screw	5075鋼套 Steel sleeve	5076搖臂支軸 Rocker shaft	5077螺帽 Nut	6017固定螺絲 Fixing screws

## 鑽孔軸 CNC Extension rod

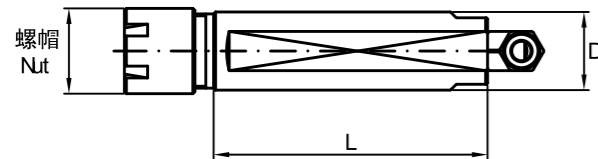
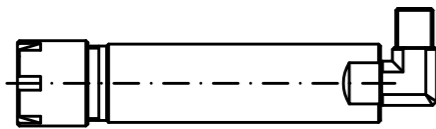
### 01 鑽孔軸單頭 Drilling shaft(single)



### 02 鑽孔軸雙頭 Drilling shaft(double)



### 03 鑽孔軸出水 Drilling shaft(out of water)



CNC鑽孔軸(單頭) CNC drilling shaft(single)	外徑 OD	長度 L	ER	螺帽 Nut	編號 Numberingr
C16-ER16M-100(單頭)	16	100	16	M	1
C19.05-ER11A-40(單頭)	19.05	40	11	A	1
C19.05-ER11A-50(單頭)	19.05	50	11	A	1
C19.05-ER11A-70(單頭)	19.05	70	11	A	1
C19.05-ER11M-75(單頭)	19.05	75	11	M	1
C19.05-ER16M-40(單頭)	19.05	40	16	M	1
C19.05-ER16M-70(單頭)	19.05	70	16	M	1
C19.05-ER16M-75(單頭)	19.05	75	16	M	1
C19.05-ER16M-105(單頭)	19.05	105	16	M	1
C20-ER11A-50(單頭)	19.05	50	11	A	1
C20-ER11A-70(單頭)	19.05	70	11	A	1
C20-ER11A-95(單頭)	20	95	11	A	1
C20-ER11A-100(單頭)	20	100	11	A	1
C20-ER16M-40(單頭)	20	40	16	M	1
C20-ER16M-50(單頭)	20	50	16	M	1
C20-ER16M-93(單頭)	20	93	16	M	1
C22-ER16M-60(單頭)	22	60	16	M	1
C22-ER16M-100(單頭)	22	100	16	M	1
C25-ER16M-70(單頭)	25	70	16	M	1
C25.4-ER11M-75(單頭)	25.4	75	11	M	1
C25.4-ER16M-50(單頭)	25.4	50	16	M	1
C25.4-ER16M-70(單頭)	25.4	70	16	M	1
C25.4-ER16M-75(單頭)	25.4	75	16	M	1
C25.4-ER16M-105(單頭)	25.4	105	16	M	1
C25.4-ER20M-70(單頭)	25.4	70	20	M	1
C32-ER20M-95(單頭)	32	95	20	M	1

CNC鑽孔軸(雙頭) CNC drilling shaft(double)	外徑 OD	長度 L	ER	螺帽 Nut	編號 Numberingr
C19.05-ER11A-38(雙頭)	19.05	38	11	A	2
C19.05-ER11A-50(雙頭)	19.05	50	11	A	2
C19.05-ER11M-70(雙頭)	19.05	70	11	M	2
C19.05-ER11M-75(雙頭)	19.05	75	11	M	2
C20-ER11A-38(雙頭)	20	38	11	A	2
C20-ER11A-50(雙頭)	20	50	11	A	2
C20-ER11A-70(雙頭)	20	70	11	A	2
C22-ER16M-60(雙頭)	22	60	16	M	2
C22-ER16M-75(雙頭)	22	75	16	M	2
C22-ER16M-90(雙頭)	22	90	16	M	2
C22-ER16M-95(雙頭)	22	95	16	M	2
C25-ER16M-70(雙頭)	25	70	16	M	2
C25.4-ER16M-50(雙頭)	25.4	50	16	M	2
C25.4-ER16M-70(雙頭)	25.4	70	16	M	2

CNC鑽孔軸(出水) CNC drilling shaft(out of water)	外徑 OD	長度 L	ER	螺帽 Nut	編號 Numberingr
C25-ER16M-70(單頭)P/T	25	70	16	M	3
C25-ER16M-100(單頭)P/T	25	100	16	M	3
C25-ER20A-55(單頭)P/T	25	55	20	A	3
C25-ER20A-100(單頭)P/T	25	100	20	A	3

## ER筒夾 ER Collet



ER8		ER11		ER16	
尺寸 Size	範圍 Range	尺寸 Size	範圍 Range	尺寸 Size	範圍 Range
1	0.5~1	1	0.5~1	1	0.5~1
1.5	1~1.5	1.5	1~1.5	1.5	1~1.5
2	1.5~2	2	1.5~2	2	1.5~2
2.5	2~2.5	2.5	2~2.5	2.5	2~2.5
3	2.5~3	3	2.5~3	3	2~3
3.175	2.675~3.175	3.175	2.675~3.175	3.175	2.675~3.175
3.5	3~3.5	3.5	3~3.5	3.5	2.5~3.5
4	3.5~4	4	3.5~4	4	3~4
4.5	4~4.5	4.5	4~4.5	4.5	3.5~4.5
5	4.5~5	5	4.5~5	5	4~5
		5.5	5~5.5	5.5	4.5~5.5
		6	5.5~6	6	5~6
		6.5	6~6.5	6.5	5.5~6.5
		7	6.5~7	7	6~7
				7.5	6.5~7.5
				8	7~8
				8.5	7.5~8.5
				9	8~9
				9.5	8.5~9.5
				10	9~10

ER20		ER25		ER32	
尺寸 Size	範圍 Range	尺寸 Size	範圍 Range	尺寸 Size	範圍 Range
1	0.5~1	1	0.5~1	1	0.5~1
1.5	1~1.5	1.5	1~1.5	1.5	1~1.5
2	1.5~2	2	1.5~2	2	1.5~2
2.5	2~2.5	2.5	2~2.5	2.5	2~2.5
3	2.5~3	3	2.5~3	3	2.5~3
3.175	2.675~3.175	3.175	2.675~3.175	3.175	2.675~3.175
3.5	3~3.5	3.5	3~3.5	3.5	3~3.5
4	3.5~4	4	3.5~4	4	3.5~4
4.5	4~4.5	4.5	4~4.5	4.5	4~4.5
5	4.5~5	5	4.5~5	5	4.5~5
5.5	5~5.5	5.5	5~5.5	5.5	5~5.5
6	5.5~6	6	5.5~6	6	5.5~6
6.5	6~6.5	6.5	6~6.5	6.5	6~6.5
7	6.5~7	7	6.5~7	7	6.5~7
7.5	6.5~7.5	7.5	6.5~7.5	7.5	6.5~7.5
8	7~8	8	7~8	8	7~8
8.5	7.5~8.5	8.5	7.5~8.5	8.5	7.5~8.5
9	8~9	9	8~9	9	8~9
9.5	8.5~9.5	9.5	8.5~9.5	9.5	8.5~9.5
10	9~10	10	9~10	10	9~10
10.5	9.5~10.5	10.5	9.5~10.5	10.5	9.5~10.5
11	10~11	11	10~11	11	10~11
11.5	10.5~11.5	11.5	10.5~11.5	11.5	10.5~11.5
12	11~12	12	11~12	12	11~12
12.5	11.5~12.5	12.5	11.5~12.5	12.5	11.5~12.5
13	12~13	13	12~13	13	12~13
		13.5	12.5~13.5	13.5	12.5~13.5
		14	13~14	14	13~14
		14.5	13.5~14.5	14.5	13.5~14.5
		15	14~15	15	14~15
		15.5	14.5~15.5	15.5	14.5~15.5
		16	15~16	16	15~16
				16.5	15.5~16.5
				17	16~17
				17.5	16.5~17.5
				18	17~18
				18.5	17.5~18.5
				19	18~19
				19.5	18.5~19.5
				20	19~20

### 特點 / Features

- 內孔精研磨 (Inner hole fine grinding)
- 前八後八滿槽設計，具較大收縮夾持範圍 (Eight full grooves in the front and eight in the back, with a large shrinkage clamping range)
- 偏擺 (Concentric accuracy): 5 $\mu$ m(0.005mm)、8 $\mu$ m(0.008mm)

## SK筒夾 SK Collet



SK6		SK10		SK13		SK16	
尺寸 Size	範圍 Range	尺寸 Size	範圍 Range	尺寸 Size	範圍 Range	尺寸 Size	範圍 Range
3	2.75~3	3	2.75~3	3	2.75~3	3	2.75~3
3.175	2.925~3.175	3.175	2.925~3.175	3.175	2.925~3.175	3.175	2.925~3.175
4	3.5~4	4	3.5~4	4	3.5~4	4	3.5~4
5	4.5~5	5	4.5~5	5	4.5~5	5	4.5~5
6	5.5~6	6	5.5~6	6	5.5~6	6	5.5~6
		8	7.5~8	8	7.5~8	8	7.5~8
		10	9.5~10	10	9.5~10	10	9.5~10
				12	11.5~12	12	11.5~12
						14	13.5~14
						16	15.5~16

### 特點 / Features

- 偏擺(Concentric accuracy):5 $\mu$ m(0.005mm)、8 $\mu$ m(0.008mm)
- 可夾持鑽頭、銑刀、絞刀(Can hold drills, milling cutters, reamers)
- 所夾持刀具柄徑公差限定h7以內(The tolerance of the shank diameter of the clamped tool is limited to within h7)
- 孔徑3以上彈性收縮0.5mm(Elastic shrinkage 0.5mm above aperture 3)

## 攻牙筒夾 Tapping collet



規格 Model	尺寸 Size	重量 Kgs	彈性收縮量 Elastic shrinkage
ER16	3		
ER16	4		
ER16	5		
ER16	6		

### 特點 / Features

- 可直接裝鑽孔軸使用，不用裝專用的攻牙軸(It can be directly installed with drilling shaft, without special tapping shaft)
- 伸縮絲具有緩衝，首牙攻入不易爛牙(The telescopic wire has a buffer, and the first tooth is not easy to rot.)
- 攻入和回退不會受轉速和進刀影響牙距(Tapping and retracting will not be affected by the speed and feed pitch)

## 止水筒夾 Water stop collet



ER11		ER16		ER20		ER25		ER32	
尺寸 Size	範圍 Range	尺寸 Size	範圍 Range	尺寸 Size	範圍 Range	尺寸 Size	範圍 Range	尺寸 Size	範圍 Range
3	2.5~3	3	2~3	3	2~3	3	2~3	3	2~3
4	3.5~4	4	3~4	4	3~4	4	3~4	4	3~4
5	4.5~5	5	4~5	5	4~5	5	4~5	5	4~5
6	5.5~6	6	5~6	6	5~6	6	5~6	6	5~6
7	6.5~7	7	6~7	7	6~7	7	6~7	7	6~7
		8	7~8	8	7~8	8	7~8	8	7~8
		9	8~9	9	8~9	9	8~9	9	8~9
		10	9~10	10	9~10	10	9~10	10	9~10
				11	10~11	11	10~11	11	10~11
				12	11~12	12	11~12	12	11~12
				13	12~13	13	12~13	13	12~13
						14	13~14	14	13~14
						15	14~15	15	14~15
						16	15~16	16	15~16
								17	16~17
								18	17~18
								19	18~19
								20	19~20